



## King Charles Crescent, KT5

£699,950

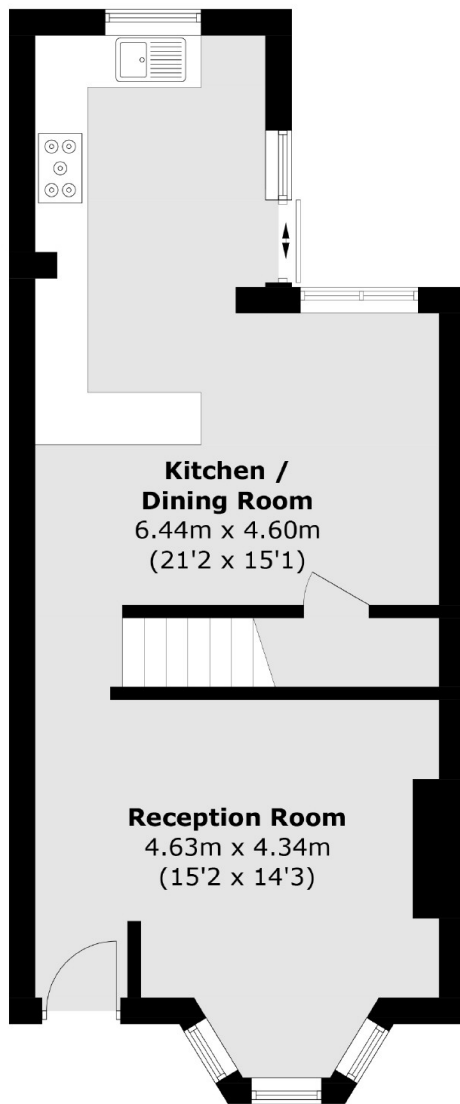
This bay fronted period house is in a great location and has been recently refurbished to a high standard throughout. Accommodation includes a front reception room, a spacious open plan kitchen/dining room, two double bedrooms, a modern bathroom and a private recently landscaped garden.

King Charles Crescent is just over half a mile away from Surbiton town centre, offering the mainline train station and a variety of shops, bars and restaurants.

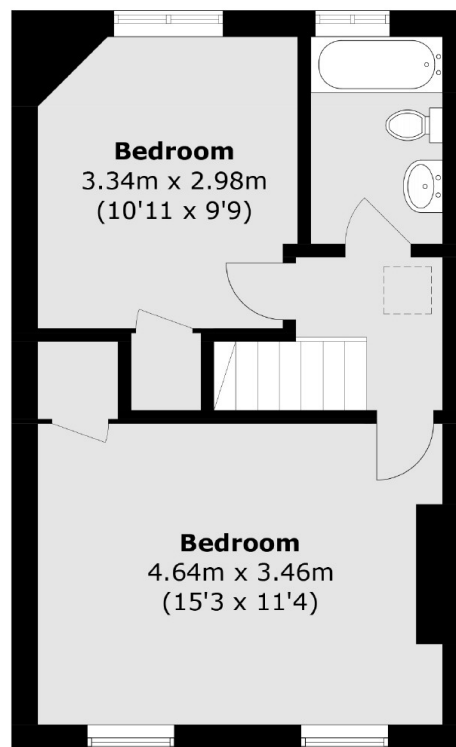
### Features

- Recently Refurbished
- Victorian House
- Two Double Bedrooms
- Kitchen Extension
- Central Location
- Landscaped Garden

# King Charles Crescent, Surbiton, KT5



**Ground Floor**



**First Floor**

Total area (approx.): 83.1 sq. m (894.5 sq. ft)