



**Highfield Close, KT6**

**£1,150,000**

**Dexters**





## Highfield Close, KT6

Launch day Saturday 10th August. A fantastic three/four bedroom, two bathroom, detached family home ideally located in the popular Long Ditton. This property has been cleverly extended to provide over 1500 sqft of accommodation.

On the ground floor, there is a double through reception room, dining room, kitchen and a further entertaining space. It also has a large office/bedroom with a bathroom.

Upstairs are three further, generous and bright bedrooms, plus a family bathroom.

Externally there is off street parking for several cars, a landscaped garden and a smart, well appointed, glass fronted, home office.

Highfield Close is in the family-friendly area of Long Ditton, approximately a mile away from Surbiton town centre with its train station and fast links to Waterloo, the popular high street and some of the areas best schools.

### Features

- Detached Home
- Three/Four Bedrooms
- Three Receptions
- Landscaped Garden
- Off Street Parking
- Home Office





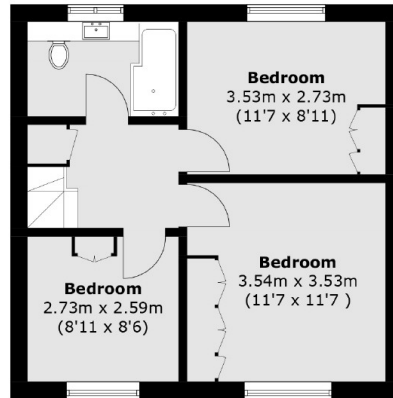




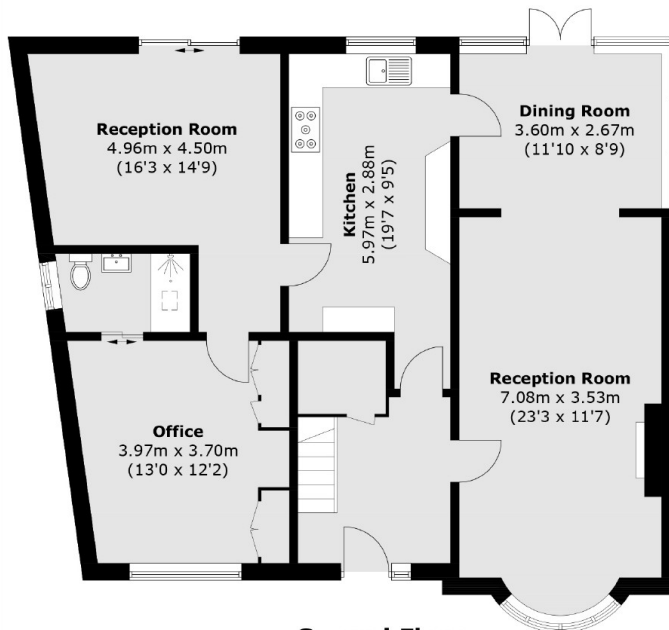




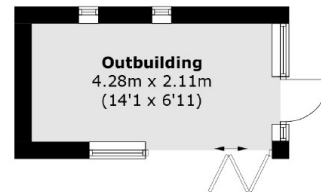
# Highfield Close, Surbiton, KT6



**First Floor**



**Ground Floor**



(Not Shown In Actual  
Location / Orientation)

Total area (approx.): 140.2 sq. m (1,509.0 sq. ft)  
Outbuilding: 9.5 sq. m (102.2 sq. ft)