

The Avenue, KT5

£389,950

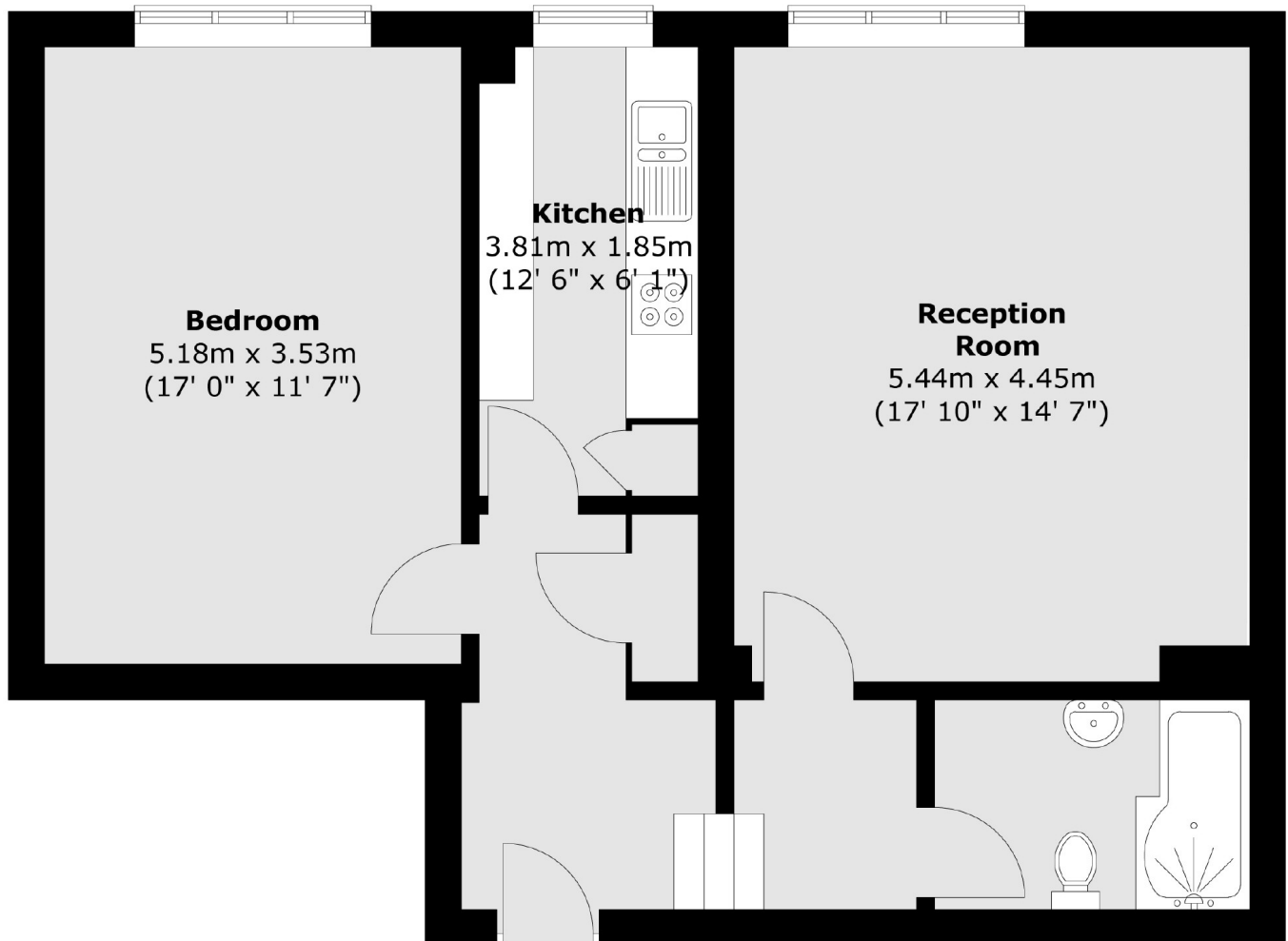
A beautiful one double bedroom Edwardian conversion situated in a sought after road in Surbiton. This well presented large apartment has a welcoming entrance hall with ample storage, a large double bedroom, separate kitchen, modern bathroom and spacious reception room that could be adapted to make a second bedroom. This property benefits from allocated parking and no onward chain.

Within 0.8 miles of Surbiton town centre and mainline train station, the shops, bars and amenities of Victoria Road are easily accessible. There are a variety of open green spaces within 500 yards and the A3 is 1 mile away.

Features

- Edwardian Conversion
- Share of Freehold
- One Bedroom
- Separate Kitchen
- Allocated Parking
- No Onward Chain

The Avenue, Surbiton, KT5



Total area (approx.) : 67.5 sq. m (726 sq. ft)