



Portsmouth Avenue, KT7

£899,950

A brand new, immaculately finished, first floor split level apartment. This luxury three bedroom, two bathroom property comes with a private garden and allocated off street parking with electric charging station

Portsmouth Avenue is approximately half a mile away from Thames Ditton train station and just over a mile from Surbiton High Street and the fast train to Waterloo. Thames Ditton Village is nearby as is the River Thames.

Features

- New Apartment
- Split level
- Three Bedrooms
- Two Bathrooms
- Private Garden
- Allocated Parking



Portsmouth Avenue, KT7

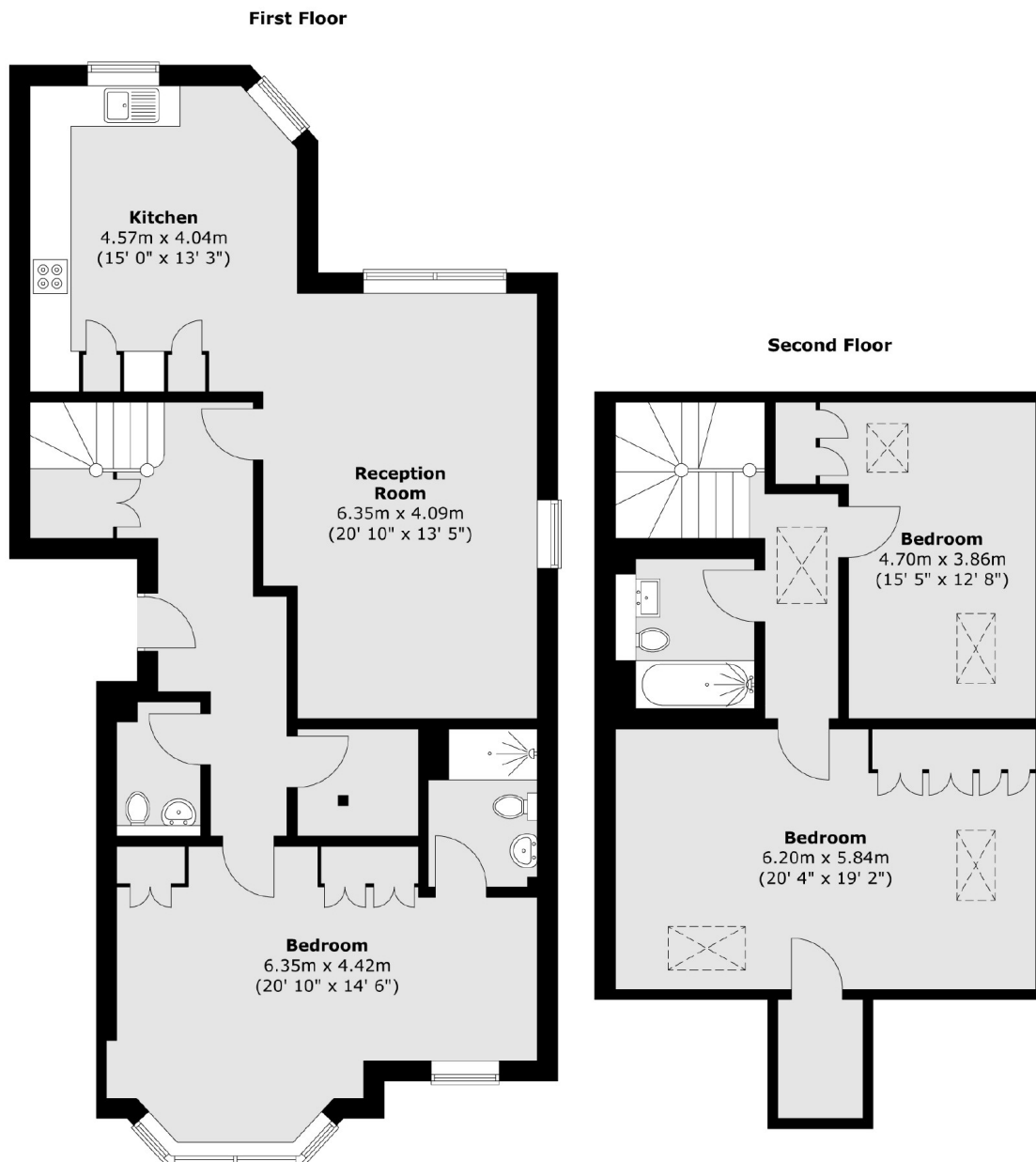
This luxury apartment is set over two floors, the living space is generous at nearly 1600 sqft. The property offers a large lounge, dining area and integrated kitchen as well as a cloakroom and utility room.

There is a bayfronted double aspect master bedroom with ensuite and upstairs there are two further good size bedrooms and a family bathroom

Externally there is an allocated off street parking space with electric charging point and a lovely secluded private garden.



Portsmouth Avenue, Thames Ditton, KT7



Total area (approx.) : 148.4 sq. m (1597 sq. ft)