



**Portsmouth Avenue, KT7**

**£950,000**

**Dexters**



## Portsmouth Avenue, KT7

A brand new, immaculately finished, first floor split level apartment. This luxury three bedroom, two bathroom property comes with a private garden and allocated off street parking with electric charging station

This luxury apartment is set over two floors, the living space is generous at nearly 1600 sqft. The property offers a large lounge, dining area and integrated kitchen as well as a cloakroom and utility room.

There is a bayfronted double aspect master bedroom with ensuite and upstairs there are two further good size bedrooms and a family bathroom

Externally there is an allocated off street parking space with electric charging point and a lovely secluded private garden.

Portsmouth Avenue is approximately half a mile away from Thames Ditton train station and just over a mile from Surbiton High Street and the fast train to Waterloo. Thames Ditton Village is nearby as is the River Thames.

### Features

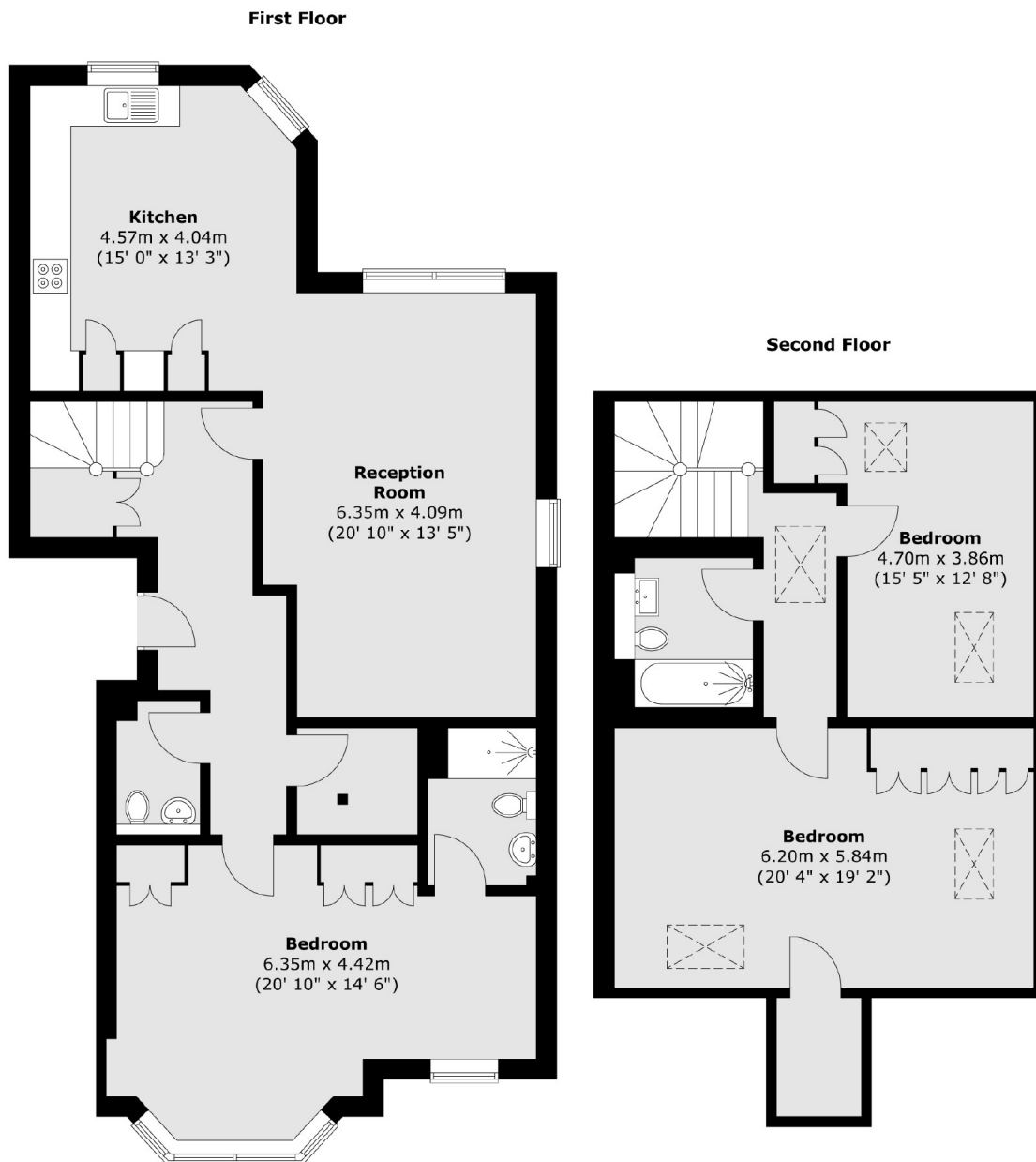
- New Apartment
- Split level
- Three Bedrooms
- Two Bathrooms
- Private Garden
- Allocated Parking







# Portsmouth Avenue, Thames Ditton, KT7



Total area (approx.) : 148.4 sq. m (1597 sq. ft)