



Ewell Road, KT6

£439,950

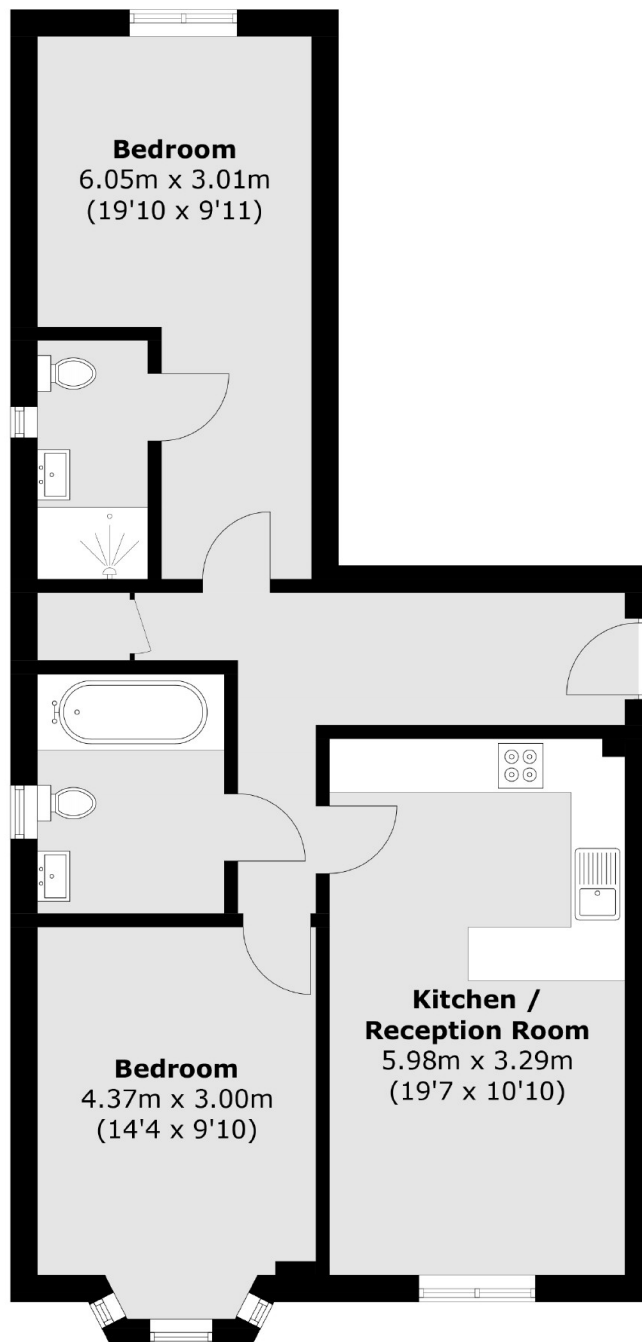
This beautiful imposing period style first floor flat has an open plan kitchen/living room, two double bedrooms, two bathrooms and a communal garden. The property was built in 2010, is set back from the road and benefits from a lift, bike storage and allocated parking.

Ewell Road offers a selection of local shops, bars and restaurants and is just over half a mile away from Tolworth train station. Surbiton town centre is approximately a mile away.

Features

- First Floor Apartment
- Two Bedrooms
- Two Bathrooms
- Lift Service
- Large Communal Garden
- Allocated Parking

Ewell Road, Surbiton, KT6



Total area (approx.): 69.5 sq. m (748.1 sq. ft)