



Church Hill Road, KT6

£899,950

Dexters



Church Hill Road, KT6

A stunning top floor duplex penthouse apartment located in the heart of Surbiton. The property boasts over 1100 sq ft of living space with three double bedrooms, two private terraces, allocated underground parking and is being sold with no onward chain.

This modern development was built in 2012 and has superb views across central Surbiton. Benefits include lift access and underground parking.

Accommodation on the ground floor consists of large entrance hallway with ample storage, a spacious principle bedroom with an en-suite shower room, two additional double bedrooms and a large family bathroom.

On the first floor there is a modern integrated kitchen that is open plan to a large, bright reception/dining room that benefits from floor to ceiling windows offering panoramic views. There is also access to two large private terraces.

St Marks Court is nestled in the heart of Surbiton, with the buzz of Surbiton high street and the convenience of the mainline train station and its fast train in to London Waterloo under half a mile away.

Features

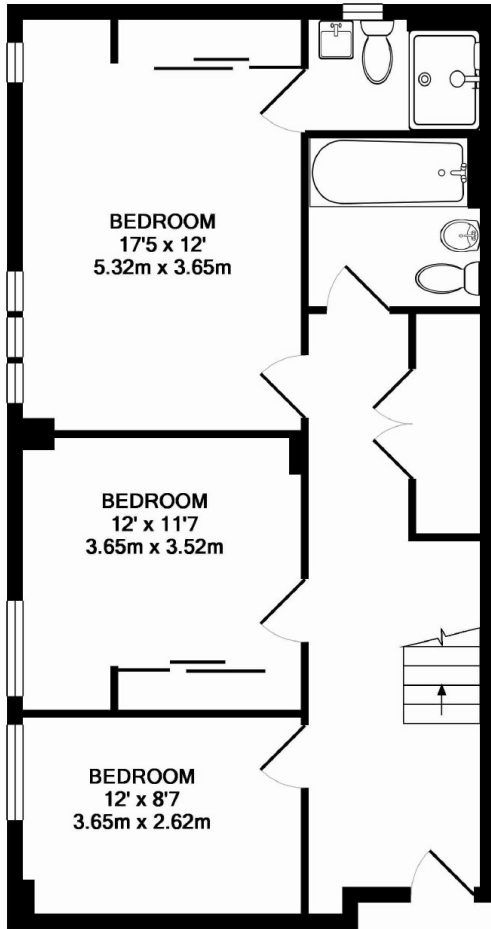
- Duplex Penthouse
- Three Double Bedrooms
- Bathroom & En Suite
- Two Private Terraces
- Underground Parking
- Central Location



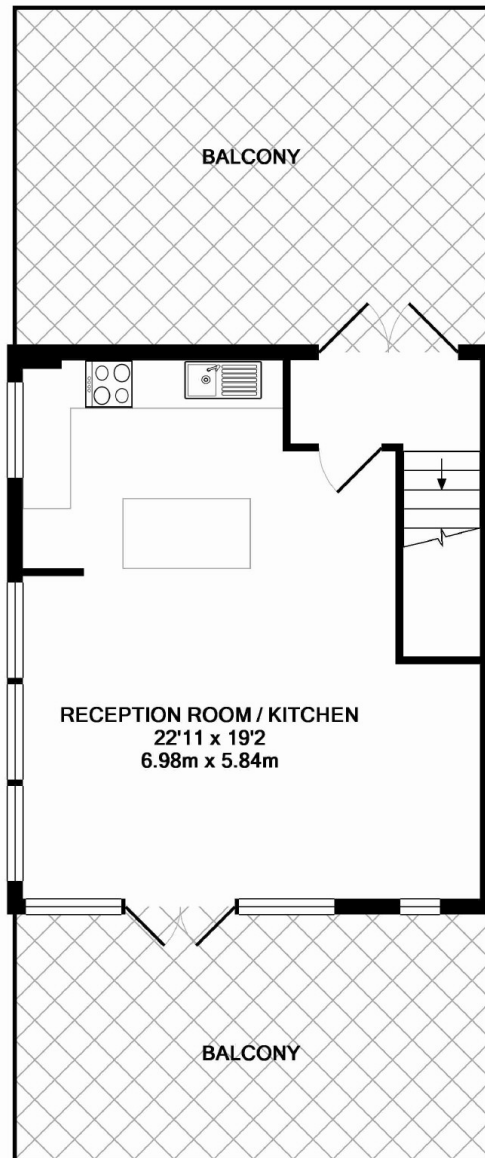




Church Hill Road, Surbiton, KT6



GROUND FLOOR
APPROX. FLOOR
AREA 718 SQ.FT.
(66.7 SQ.M.)



1ST FLOOR
APPROX. FLOOR
AREA 447 SQ.FT.
(41.5 SQ.M.)

CHURCH HILL ROAD, KT6
TOTAL APPROX. FLOOR AREA 1165 SQ.FT. (108.2 SQ.M.)

All measurements taken to RICS Guidelines for Gross Internal Area. Whilst every attempt has been made to ensure the accuracy of the floor plan contained here, all measurements are approximate and no responsibility is taken for any error, omission or misstatement. This plan is for illustrative purposes only and should be used as such by any prospective purchaser. The services, systems and appliances shown have not been tested and no guarantee as to their operability or efficiency can be given.

Made with Metropix ©2015