



## Arlington Road, KT6

£999,950

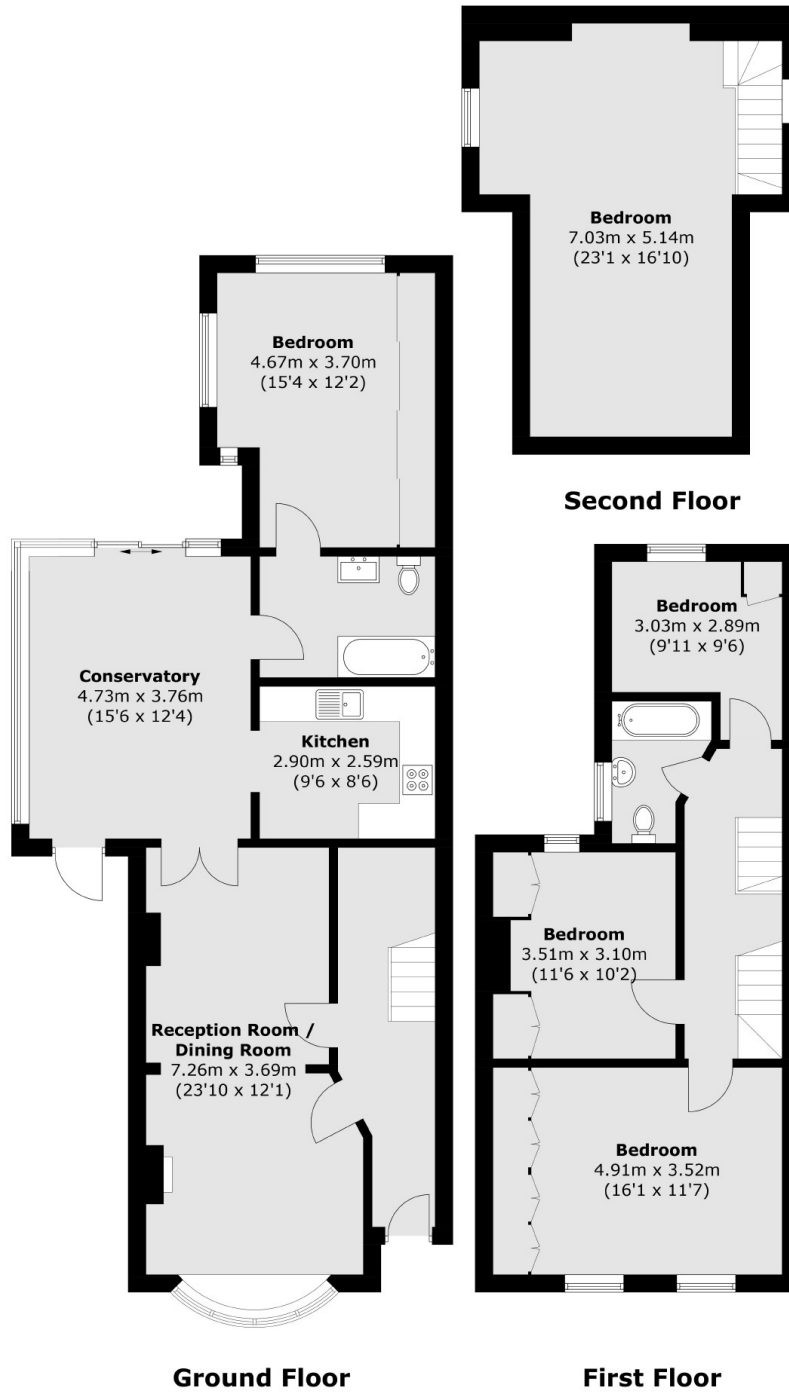
A detached, exposed brick, Victorian family home. With four/five bedrooms, two bathrooms, two reception rooms and a conservatory. This property has a carport, off street parking, a beautiful, walled, rear garden and can also be extended further (STPP)

Arlington Road is in the heart of Surbiton with everything you need less than half a mile away, including the high street, the mainline train station, with fast trains to Waterloo and the desirable Maple Road.

### Features

- Detached House
- Four Bedrooms
- Two Bathrooms
- Off Street Parking
- Car Port
- Potential To Extend (STPP)

# Arlington Road, Surbiton, KT6



Total area (approx.): 163.0 sq. m (1754.5 sq. ft)