



Tolworth Park Road, KT6

£975,000

Dexters



Tolworth Park Road, KT6

This beautiful semi detached period home has been extended into the loft and to the rear. There is a front reception room, an open plan kitchen dining room, utility room and downstairs w/c. Upstairs there are four good size bedrooms and two bathrooms. The property also benefits from a pretty rear garden with side access and off street parking.

On the ground floor there is a bay fronted reception room with period features and open fire place. The rear of the property has been extended with a high specification open plan kitchen, separate utility room and WC.

On the first floor there are two spacious double bedrooms and two bathrooms. On the second floor there are two further double bedrooms, one with a Juliette balcony overlooking the garden.

Outside there is a good sized garden with a patio area and side access. There is off-street parking to the front of the house with an electric car charging point.

Tolworth Park Road is a peaceful road just over a mile away to Surbiton town centre with its fast link train line to London. Tolworths mainline train station is just half a mile away and has easy access to the A3.

Features

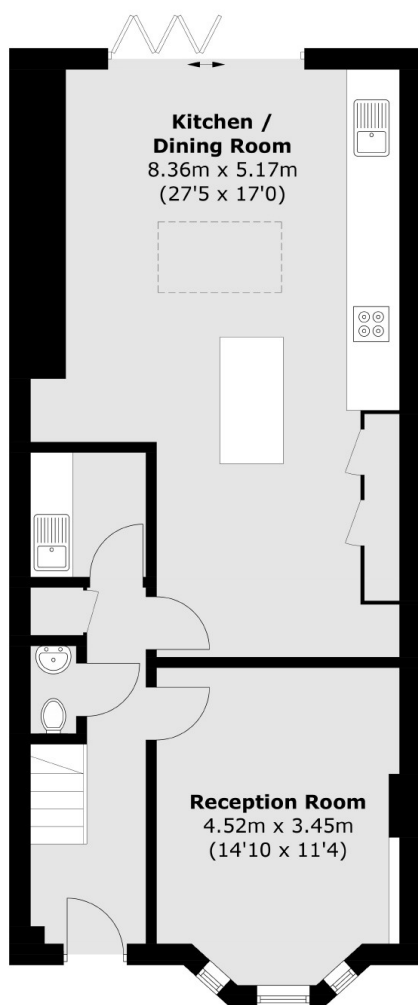
- Period Property
- Semi Detached
- Recently extended
- Four Bedrooms
- Two Bathrooms
- Utility Room



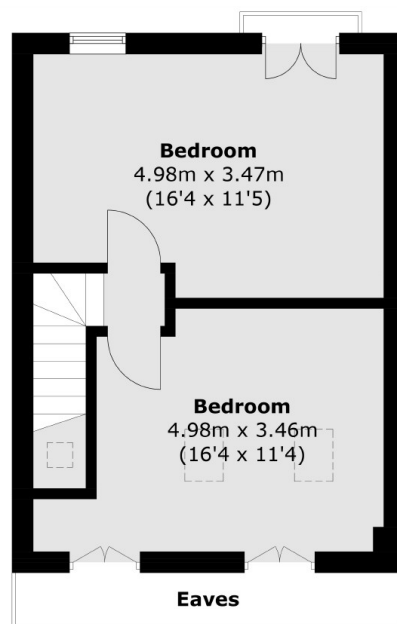




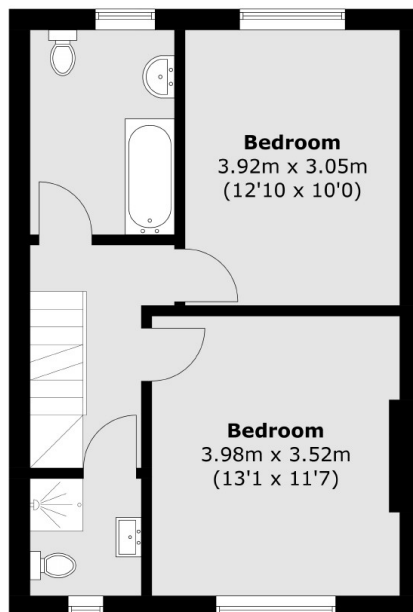
Tolworth Park Road, Surbiton, KT6



Ground Floor



Second Floor



First Floor

Total area (approx.): 144.8 sq. m (1,558.6 sq. ft)
(Excluding Eaves)