



## Beaconsfield Road, KT5

### £749,950

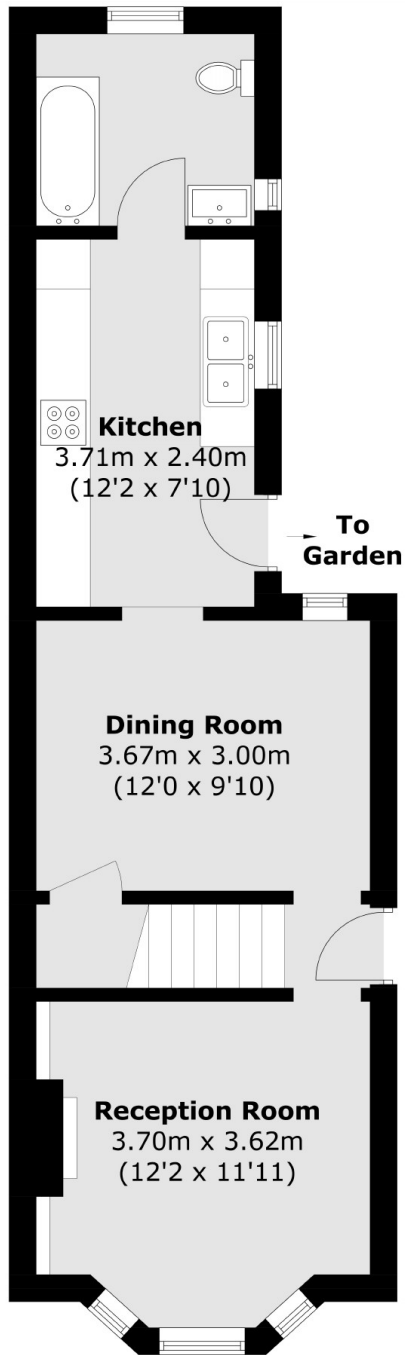
A beautiful, bay fronted, exposed brick Victorian home. This property offers a bright reception room with fireplace, a rear dining room and an immaculate integrated kitchen. There are also three bedrooms, two bathrooms and potential to extend (STPP). The property is semi detached, has side access and a gorgeous sunny rear garden.

With Fishponds Park and Alexandra Park just under 0.2 miles away, Beaconsfield Road is conveniently located, there are local shops, bars and restaurants on your doorstep as well as the popular 'Coffee On The Corner' situated on the road. Surbiton town centre with its fast train links into London is just under a mile away.

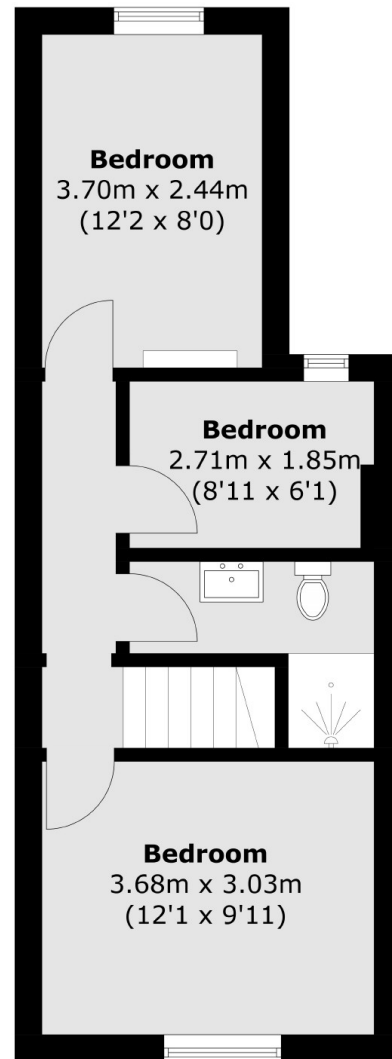
### Features

- Victorian House
- Semi-Detached
- Three Bedrooms
- Two Reception Rooms
- Scope To Extend (STPP)
- Sought After Road

# Beaconsfield Road, Surbiton, KT5



**Ground Floor**



**First Floor**

Total area (approx.): 80.0 sq. m (861.0 sq. ft)