



Raeburn Avenue, KT5

£859,950

Dexters



Raeburn Avenue, KT5

A large, bay fronted, three double bedroom 1930's home. This traditional tile hung property sits on a large plot, with three reception rooms, a garage to the side, off street parking to the front and a garden in excess of 100ft to the rear.

The ground floor has a large central hallway with access to the two main reception rooms and the conservatory. There is a large kitchen, a utility room and a WC.

The first floor has three double bedrooms and a family bathroom. To the side of the property is a garage that could be converted (STPP) It could also be extended to the rear and in to the loft (STPP).

There is a wonderful double plot landscaped garden and plenty of off street parking.

Raeburn Avenue is in the family-friendly area of Berrylands, approximately a mile away from four mainline train stations and in great catchment area for excellent local schools.

Features

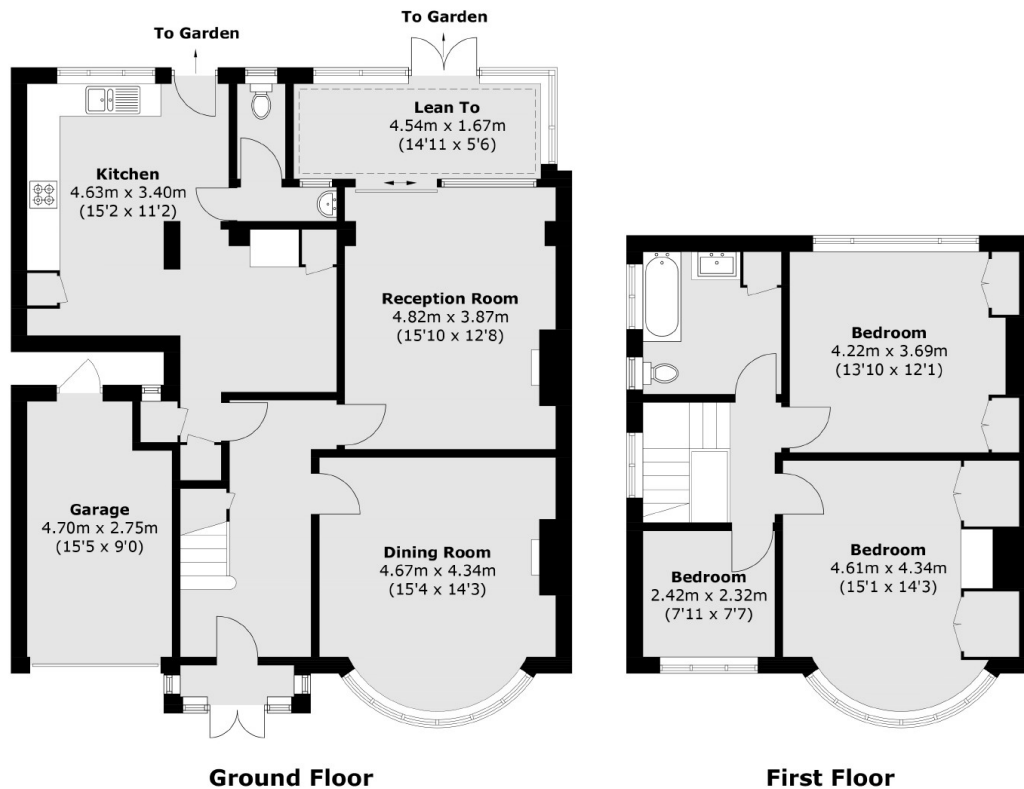
- Semi-Detached
- Three Reception Rooms
- Three Bedrooms
- Two Bathrooms
- Off-Street Parking
- Scope to Extend (STPP)







Raeburn Avenue, Surbiton, KT5



Total area (approx.): 143.8 sq. m (1,547.9 sq. ft)
Garage : 12.3 sq. m (132.4 sq. ft)