



Brighton Road, KT6

£388,000

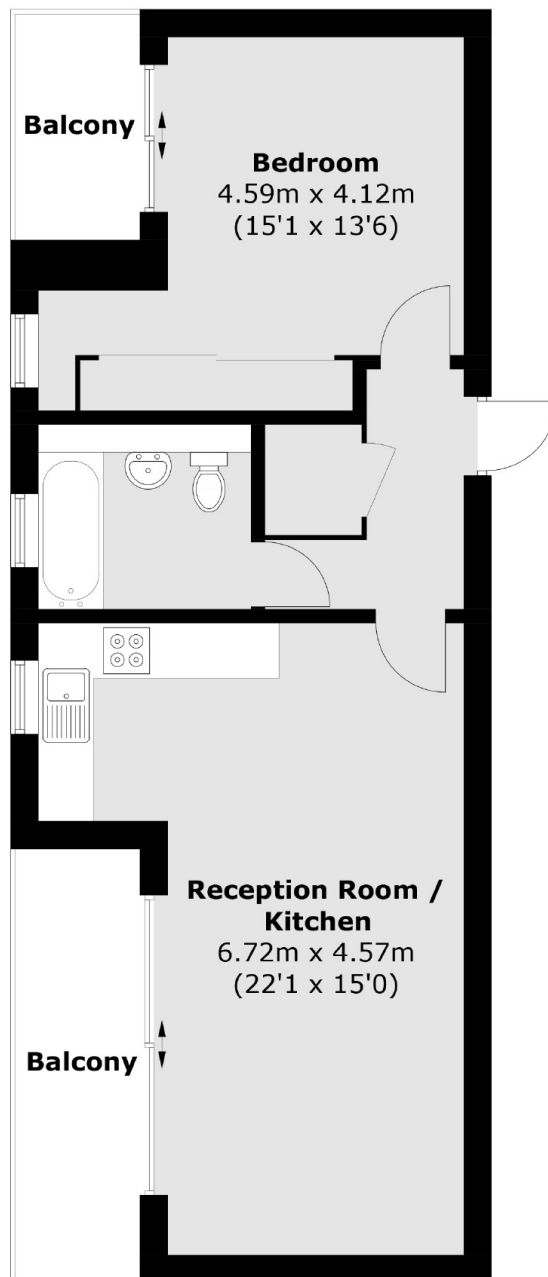
An immaculate, modern apartment situated in a central location. Accommodation includes an open plan kitchen/reception room with access to a balcony, one double bedroom also with a private balcony, and a modern bathroom.

Brighton Road is in the heart of Surbiton, with the buzz of the desirable Maple Road and the popular high street both around the corner. Surbiton's mainline train station is less than half a mile away.

Features

- Immaculately Presented
- Open Plan Living
- One Double Bedroom
- Private Balconies
- Close to River
- Central Location

Brighton Road, Surbiton, KT6



Total area (approx.): 51.1 sq. m (550.0 sq. ft)
Balcony area (approx.): 9.6 sq. m (103.3 sq. ft)