



## Portsmouth Road, KT6

£499,950

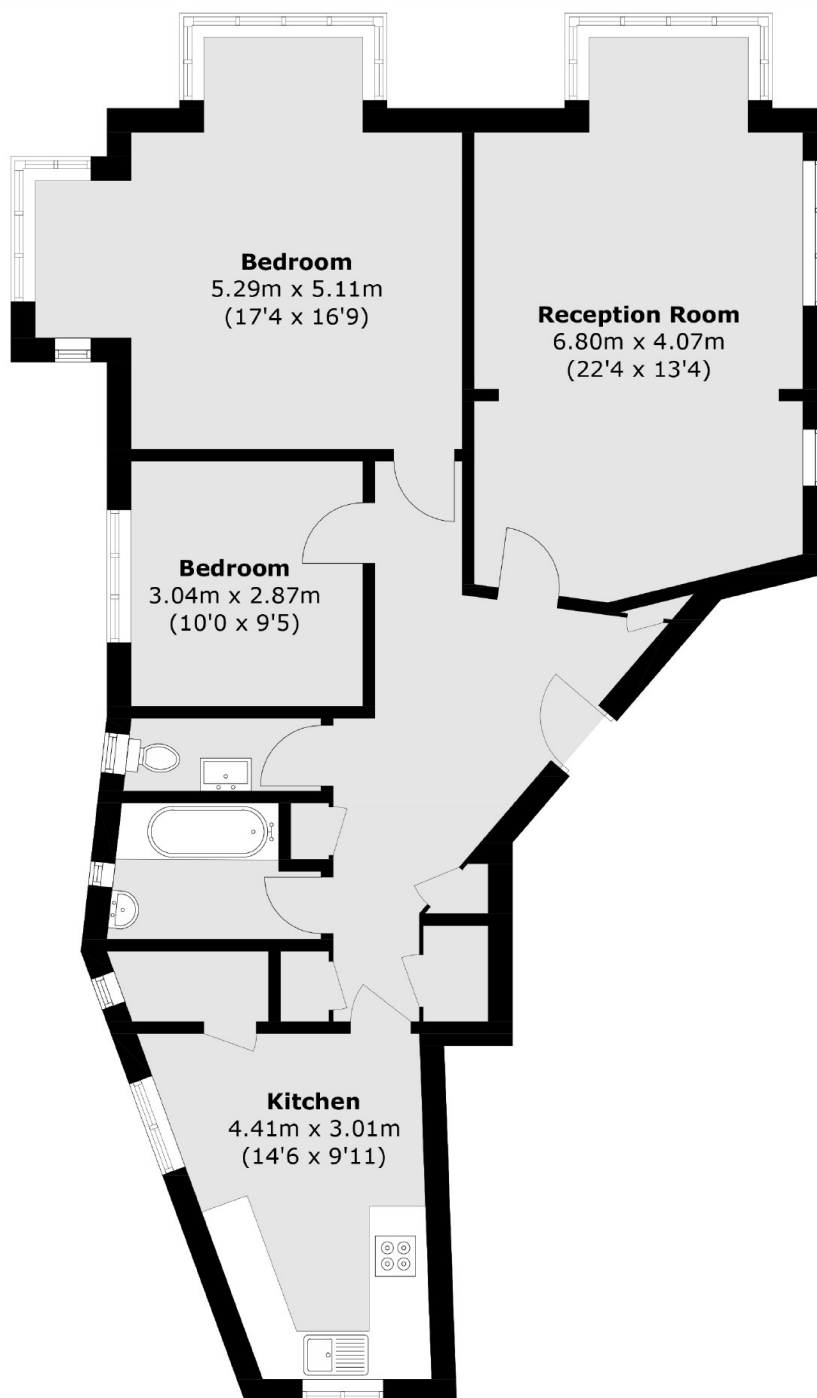
This spacious ground floor flat is set in an impressive and sought after mansion block overlooking the River Thames. It offers two double bedrooms, a generous dual aspect living/dining room, separate eat in kitchen, and a bathroom. The property has the added benefit of no onward chain.

Portsmouth Road is one of Surbiton's premier river roads, with the idyllic River Thames running alongside it. Surbiton high street and the mainline train station, with fast train to Waterloo, are approximately half a mile away.

### Features

- Riverside Development
- Spacious Apartment
- Two Double Bedrooms
- Ground Floor
- No Onward Chain
- Long Lease

# Portsmouth Road, Surbiton, KT6



Total area (approx.): 94.7 sq. m (1,019.3 sq. ft)