



Clearwater Place, KT6

£1,100,000

Dexters



Clearwater Place, KT6

This rarely available split level three/four bedroom apartment is over 2000 square foot. It is set in a luxury gated riverside development. and offers flexible living space with a private terrace, a double garage, three bedrooms, a studio/ gym/workspace and two bathrooms.

The ground floor offers flexible living space with a large garage and two fantastic rooms that could be used for a studio, gym or cinema room, perfect for those working from home.

On the first floor there is a spacious entrance hall that leads to the eat in kitchen, a large dual aspect living room with views of the grounds, three good sized bedrooms and two bathrooms.

Externally, this prestigious gated development offers extensive, landscaped and well cared for grounds, views of the River, underground parking and really is a must see!

With the idyllic River Thames on the door step, and Surbiton high street and mainline train station with fast train to London, about half a mile away, Clearwater Place a beautiful development.

Features

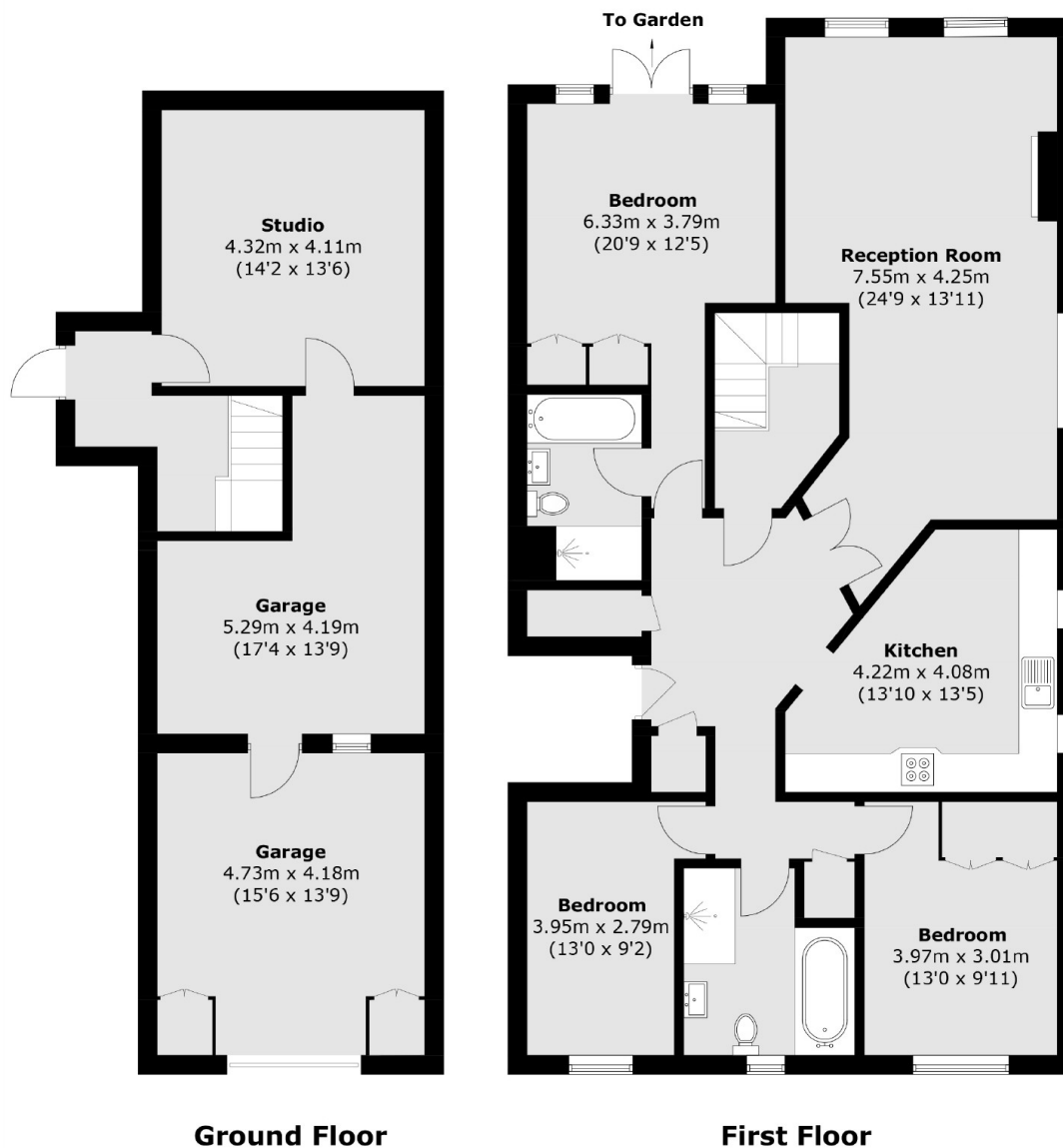
- Prestigious Gated Development
- Over 2000 Square Foot
- Expansive Communal Gardens
- Riverside Development
- Three/Four Bedrooms
- Garage and Parking







Clearwater Place, Surbiton, KT6



Total area (approx.): 187.0 sq. m (2,012.9 sq. ft)