



Beaconsfield Road, KT5

£749,950

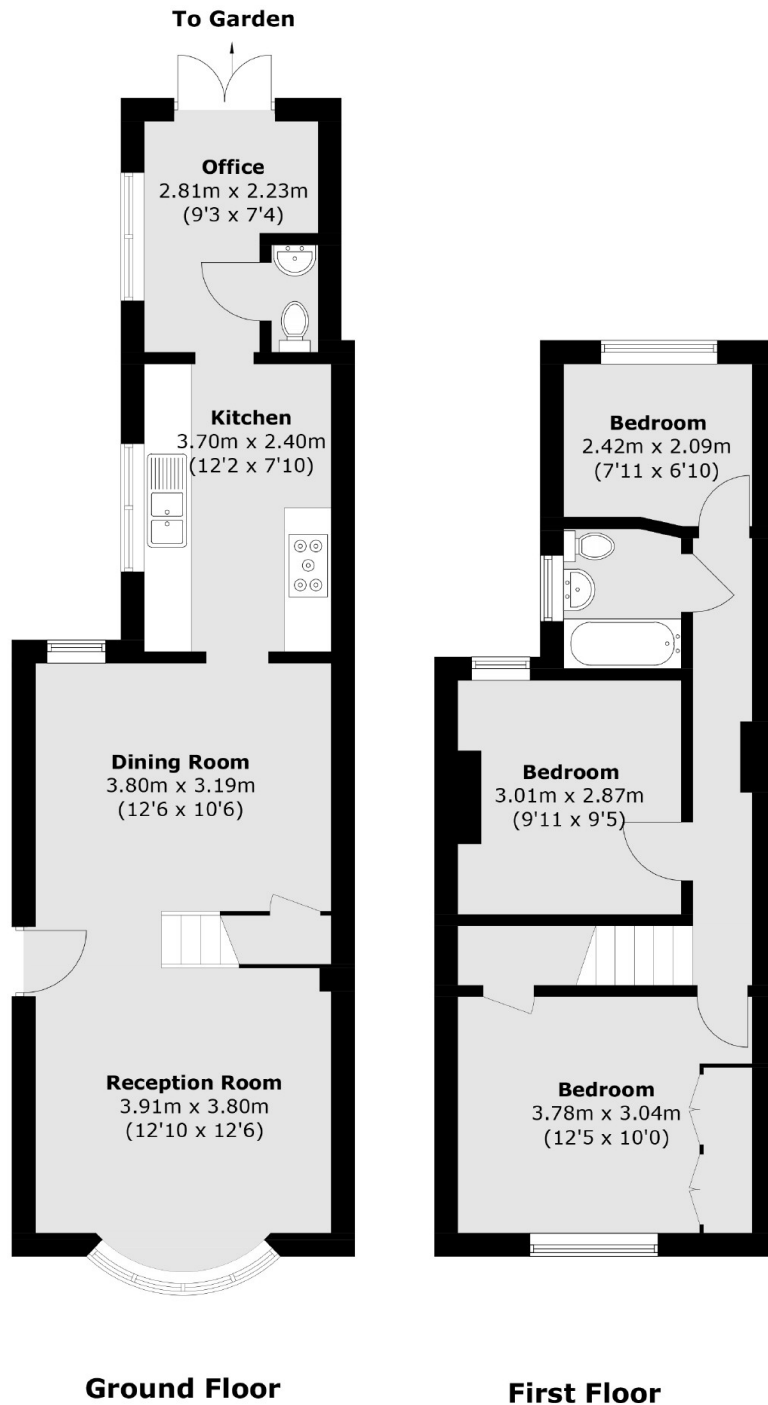
This semi-detached Victorian family home is in a great location and is presented to a high standard throughout. Accommodation includes a bay fronted reception room, separate dining room, a modern kitchen, downstairs w/c and a study. There are also three bedrooms, a family bathroom and a private rear garden.

Beaconsfield Road is a desirable and sought after road with Fishponds Park and Alexandra Park just under 0.2 miles away and the convenience of local shops, bars and restaurants on your doorstep. Surbiton town centre with its fast train links into London is just under a mile away.

Features

Victorian House
Semi-Detached
Three Bedrooms
Two Reception Rooms
Scope To Extend
Sought After Road

Beaconsfield Road, Surbiton, KT5



Total area (approx.): 81.9 sq. m (881.5 sq. ft)