



Indigo Square, KT6

£699,950

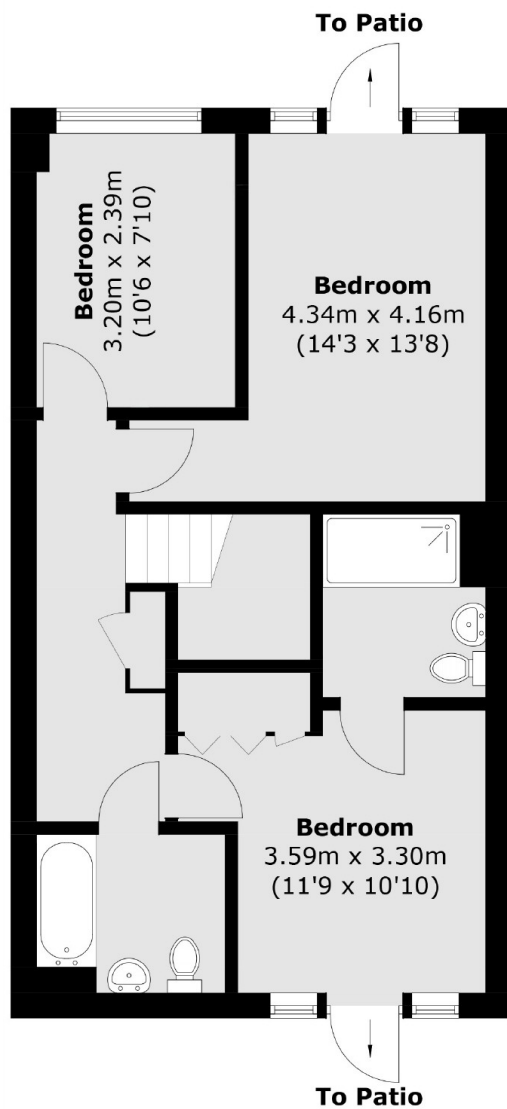
A stunning split level luxury apartment, away from the hustle and bustle of the main road, with a large wrap-around reception room, three quiet bedrooms, two bathrooms, a private garden and secure underground parking, this ground floor apartment offers plenty of space and is ideally located in the heart of Surbiton. (For investors or buyers with flexible timescales only).

Indigo Square development is in central Surbiton, moments from the idyllic River Thames and 7 minutes walk to Surbiton train station, with fast access to London Waterloo. The development also features a nursery and a communal garden / playground, perfect for those with families or looking to settle down.

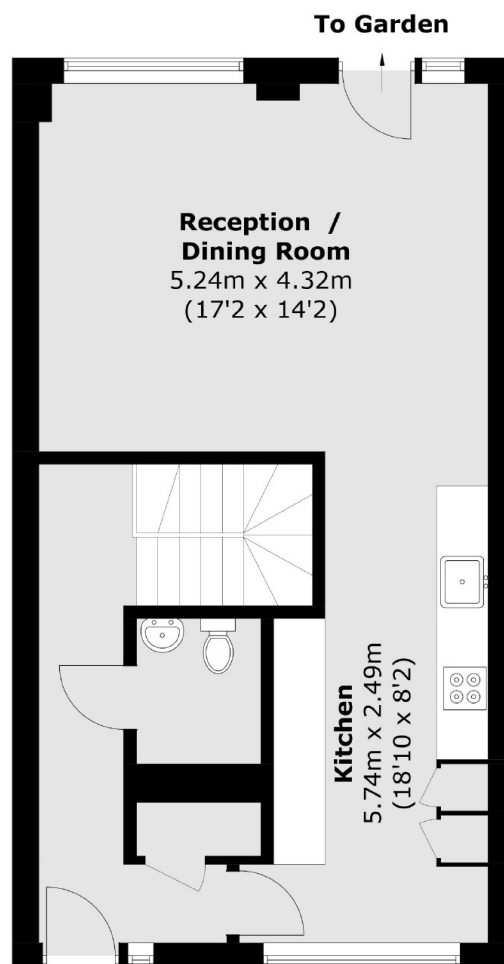
Features

- Two Reception Rooms
- Three Bedrooms
- 1,116 sq ft
- Private Garden
- Underground Parking
- Central Location

Indigo Square, Surbiton, KT6



Ground Floor



Basement