



Cotterill Road, KT6

£499,950

This large two bedroom property has scope to develop and extend throughout. There is a beautiful mature garden, no onward chain, a driveway, integral garage and also the option to buy this on its own or alongside the neighbouring property.

Located in a highly sought after and quiet tree lined road within a mile of Surbiton's town centre and mainline station. The area has popular schools, a selection of restaurants and a frequent local bus service.

Features

- Two Bedrooms
- Garage
- Driveway
- Scope to Extend
- Large Mature Garden
- Great Location



Cotterill Road, KT6

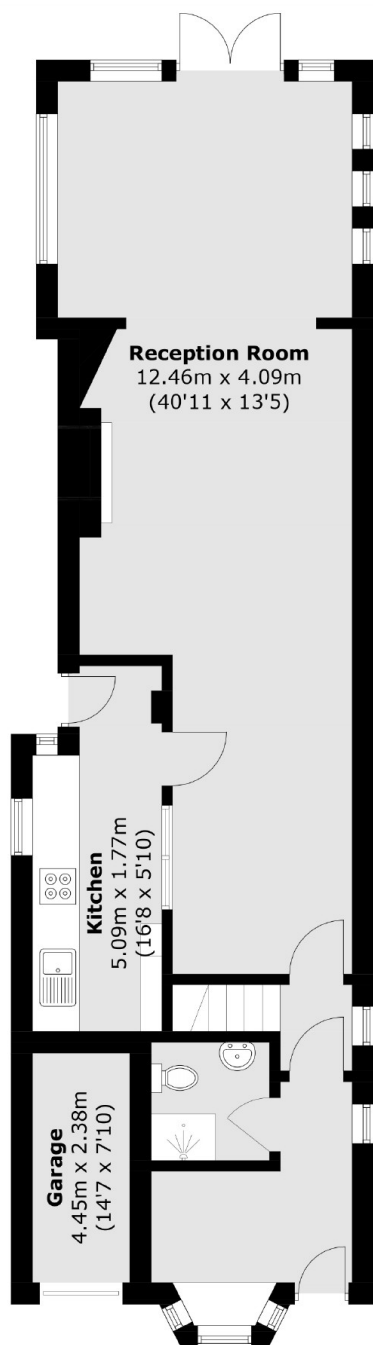
The ground floor is larger than average, with a bay fronted reception room, a spacious through reception/dining room, a downstairs shower room, a fitted kitchen and integral garage.

On the first floor there are two bay fronted bedrooms, both with fitted wardrobes and a family bathroom. There is scope to extend this floor further to create a third or fourth bedroom (STPP).

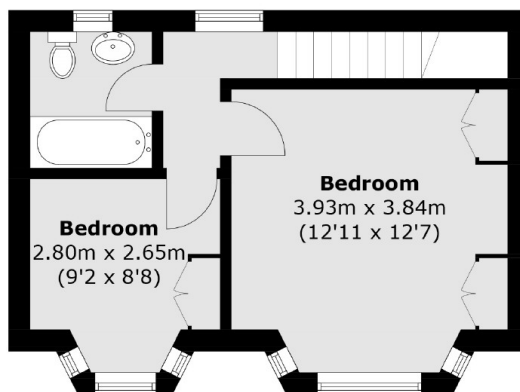
To the front of the property there is a driveway to fit one or two cars and a large mature private garden that can be accessed through the garage. The property offers scope to extend and develop throughout to create a wonderful family home.



Cotterill Road, Surbiton, KT6



Ground Floor



First Floor

Total area (approx.): 93.8 sq. m (1,009.7 sq. ft)
Garage : 4.3 sq. m (46.3 sq. ft)