



**Tolworth Park Road, KT6**

**£725,000**

**Dexters**



## Tolworth Park Road, KT6

This Victorian semi detached house has been beautifully refurbished to a high standard throughout. The property has an open plan kitchen, two reception rooms, three bedrooms and two modern bathrooms. There is also off street parking, side access and a pretty private garden.

The ground floor has been extended to the rear and has a modern open plan kitchen with bi-folding doors out onto the garden. There is a stylish contemporary bathroom and a bay fronted reception room.

On the first floor there are three good sized bedrooms and an en suite shower room. There is also further scope to extend into the loft (STPP).

Externally there is a good sized garden with patio area, lawn and a storage shed. There is also side access and off street parking. This property really is a must see so please call us on 020 8390 3939 to arrange a viewing.

Tolworth Park Road is just over half a mile away from Tolworth's mainline train station and has easy access to the A3. Surbiton town centre and fast link train line to London is just over a mile away.

### Features

- Victorian House
- Beautifully Refurbished
- Three Bedrooms
- Two Bathrooms
- Open plan Kitchen
- Off Street Parking





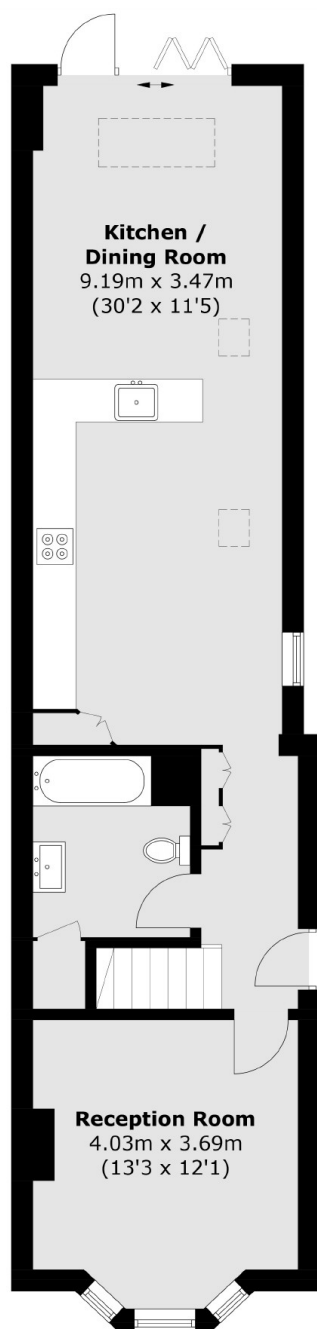




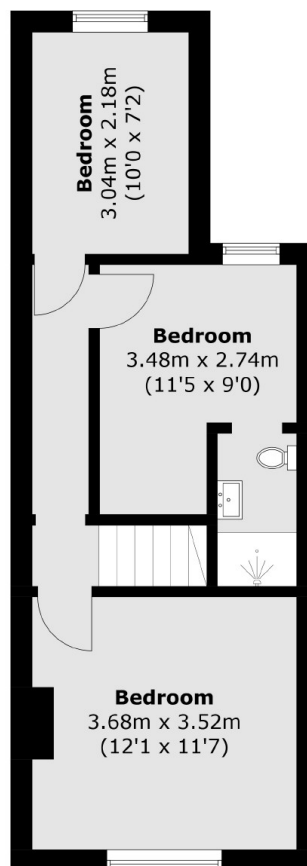




# Tolworth Park Road, Surbiton, KT6



**Ground Floor**



**First Floor**

Total area (approx.): 97.2 sq. m (1,046.3 sq. ft)