



Portsmouth Road, KT7

£335,000

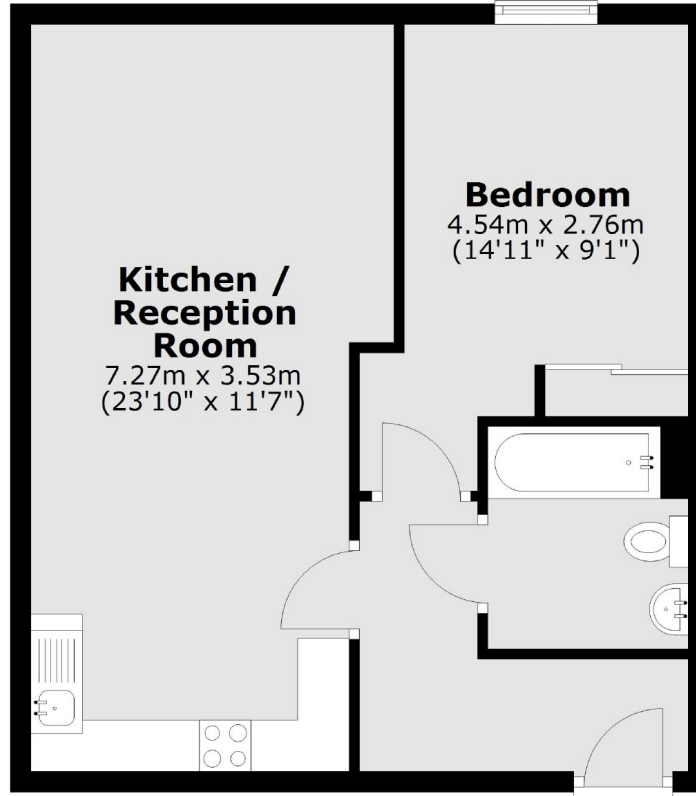
This modern property offers a bright kitchen/dining/reception area with integrated appliances. It also has one large double bedroom and a bathroom. It is on the top floor and also comes with an allocated parking space.

Portsmouth Road is a highly convenient road with great access to the A3 and into Thames Ditton Village and Central Surbiton. This property is just under 2 miles from Surbiton town centre and under a mile from Thames Ditton.

Features

- Open Plan
- Modern Condition
- 1 bedroom
- Allocated Parking
- Great Location
- Top Floor

Portsmouth Road, Thames Ditton, KT7



Total area: approx. 46.4 sq. metres (499.9 sq. feet)