



## Richmond Grove, KT5

£699,950

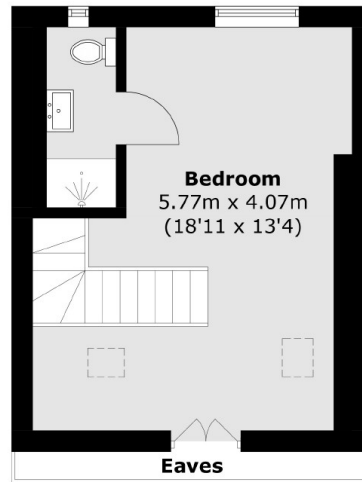
This charming Victorian home is arranged over three floors and includes three bedrooms, two bathrooms and a private south-facing garden, a large kitchen/diner and a separate reception room.

Richmond Grove is off of Ewell Road, offering a variety of bars, restaurants and local shops. Surbiton town centre is approximately half a mile away, with the mainline train station and popular high street.

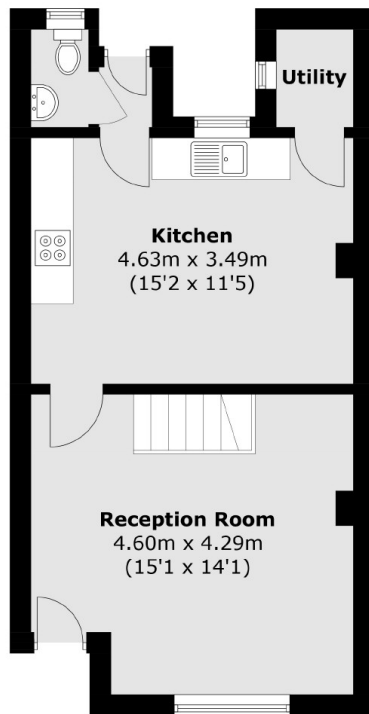
### Features

Victorian  
Three Bedrooms  
Two Bathrooms  
Potential to Extend (STPP)  
South-Facing Garden  
Convenient Location

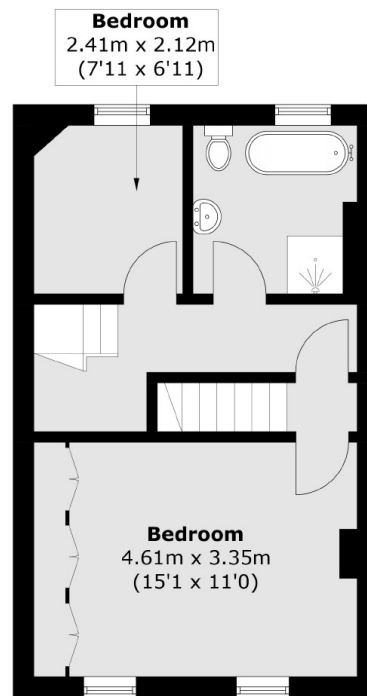
# Richmond Grove, Surbiton, KT5



**Second Floor**



**Ground Floor**



**First Floor**

Total area (approx.): 102.5 sq. m (1,103.2 sq. ft)  
(Excluding Eaves)