



Brighton Road, KT6

£625,000

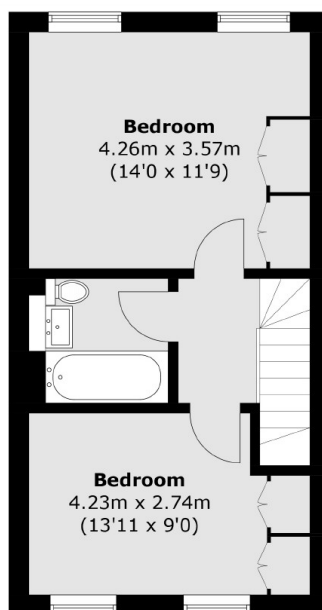
A modern, well presented, semi detached home, situated in a gated development in the heart of central Surbiton. This property has an eat in kitchen, a bright reception room with doors out to the rear courtyard garden, two spacious bedrooms, a bathroom, w/c and off street parking. No onward chain.

With the River Thames, Maple Road, the farmers market and Surbiton high street with mainline train station (fast train to Waterloo in 17 mins) all within half a mile away, this house is peacefully nestled in the heart of town.

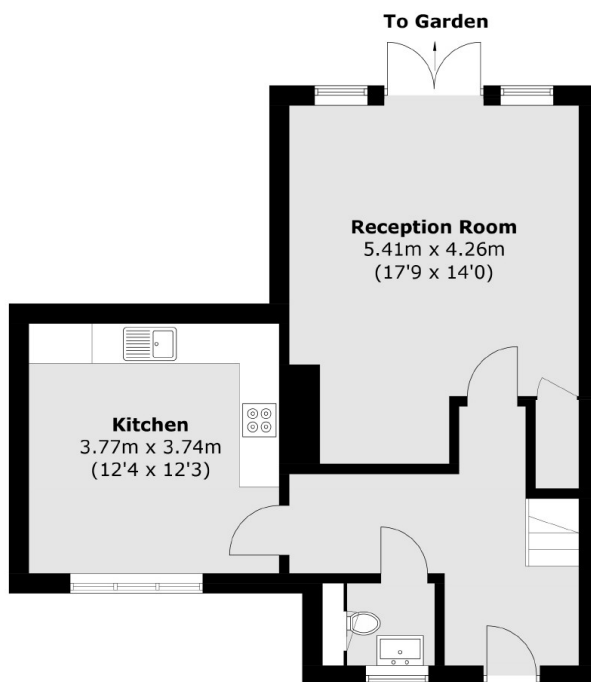
Features

- Freehold House
- Gated Development
- Two Double Bedrooms
- Off Street Parking
- Private Courtyard
- No Onward Chain

Brighton Road, Surbiton, KT6



First Floor



Ground Floor

Total area (approx.): 87.2 sq. m (938.6 sq. ft)