



## The Retreat, KT5

£620,000

This three story townhouse has been recently refurbished and offers plenty of flexible living space including two reception/dining rooms, four double bedrooms, one bathroom with a separate W/C, the option of an en suite bathroom, a private rear garden and off-street parking.

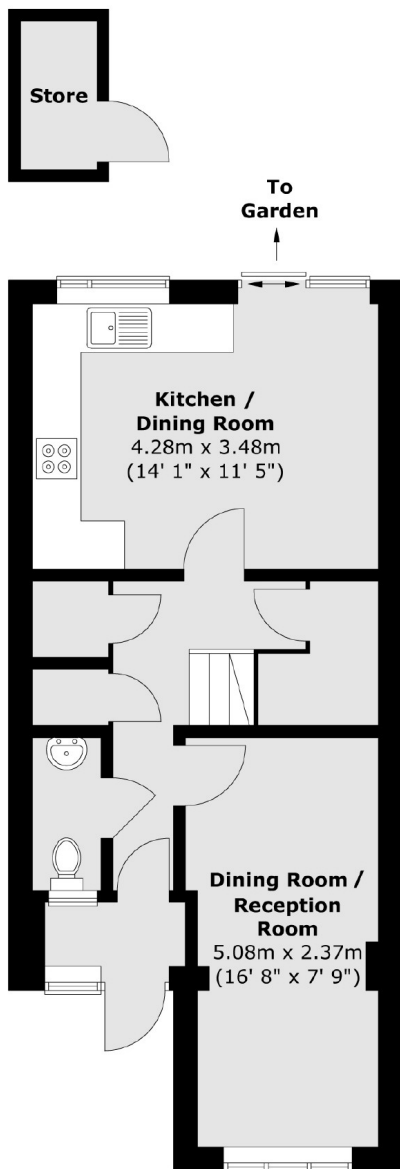
The Retreat is a peaceful cul-de-sac, just over half a mile away from Surbiton town centre, offering the mainline train station and a variety of local shops, bars and restaurants.

### Features

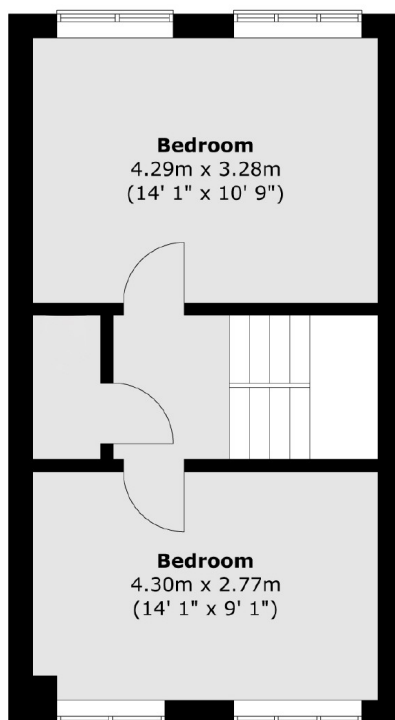
- Townhouse
- Four Double Bedrooms
- Separate W/C
- Versatile Living Space
- Off Street Parking
- Private Garden

# The Retreat, Surbiton, KT5

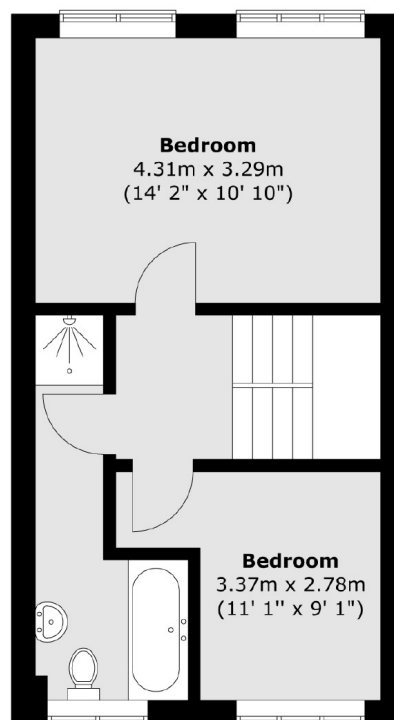
## Ground Floor



## First Floor



## Second Floor



Total area (approx.) : 111.8 sq. m (1203 sq. ft)  
Total store area (approx.) : 1.7 sq. m (18 sq. ft)