



## Tolworth Road, KT6

£549,950

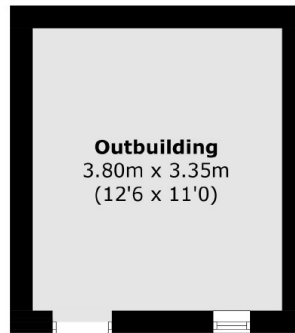
A Victorian semi detached cottage, with two double bedrooms, a luxurious bathroom suite with walk in corner shower cubicle, bay fronted reception with feature fireplace, a stylish beech kitchen with appliances and a good size dining room with direct access to a big south-west facing garden.

Located on the borders of Surbiton, the area has access to a good local bus service and excellent road links. Surbiton has a good selection of local shops, bars and restaurants and a mainline station with services into London Waterloo in less than 20 minutes.

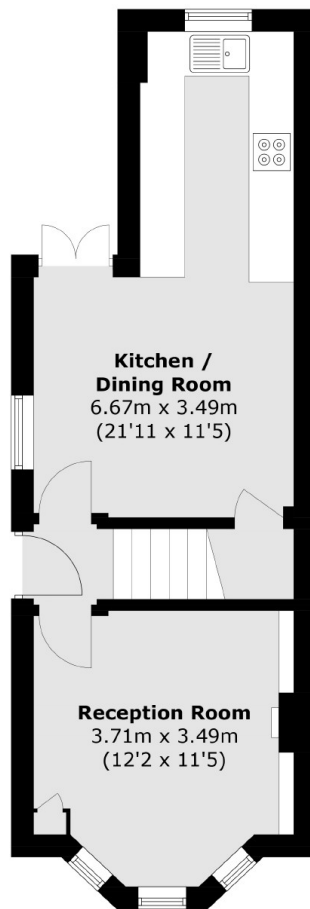
### Features

- Victorian Cottage
- Two Double Bedrooms
- Luxurious Bathroom Suite
- Bay Fronted Reception Room
- Quiet Road
- Great Location

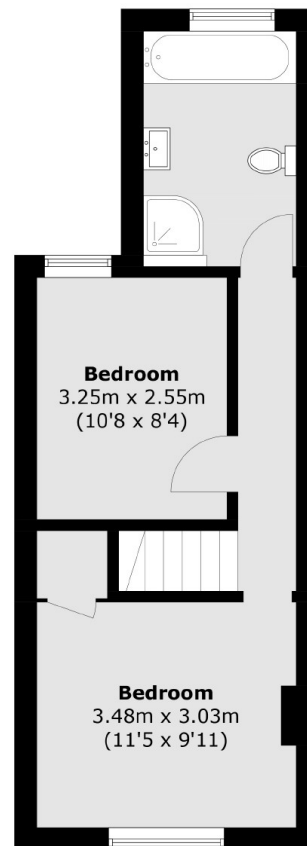
# Tolworth Road, Surbiton, KT6



(Not Shown In Actual  
Location / Orientation)



**Ground Floor**



**First Floor**

Total area (approx.): 66.9 sq. m (765.1 sq. ft)  
Outbuilding area (approx.): 12.8 sq. m (137.8 sq. ft)