



Raeburn Avenue, KT5

£675,000

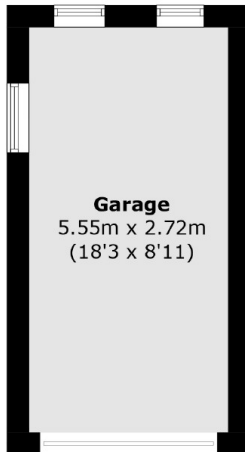
This spacious three bedroom semi-detached family home has two reception rooms, a garage, a large (approx. 80ft) westerly facing back garden and off-street parking. There is also potential to extend to the side, back and into the loft (STTP)

Raeburn Avenue is in the family-friendly area of Berrylands, approximately a mile away from four mainline train stations and in great catchment area for excellent local schools.

Features

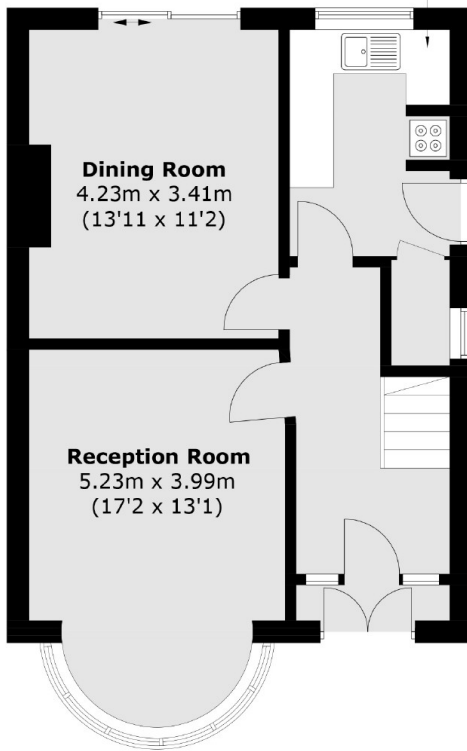
- Semi Detached
- Three Bedrooms
- Two Reception Rooms
- Off-Street Parking
- Potential to Extend (STTP)
- No Onward Chain

Raeburn Avenue, Surbiton, KT5

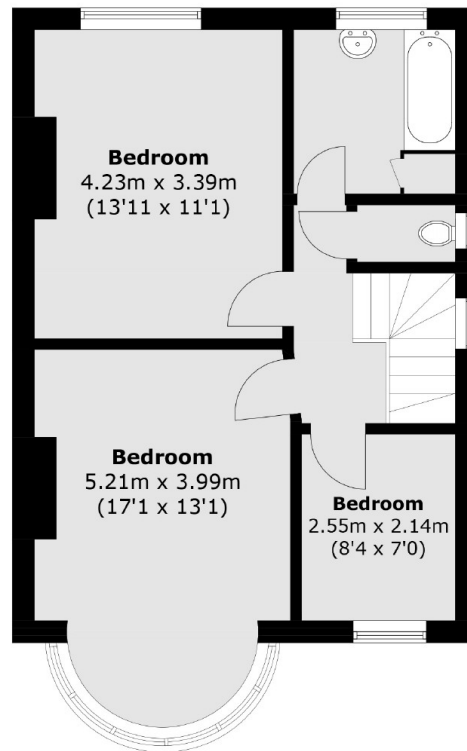


(Not Shown In Actual
Location / Orientation)

Kitchen
3.11m x 2.22m
(10'2 x 7'3)



Ground Floor



First Floor

Total area (approx.): 99.8 sq. m (1074.3 sq. ft)
Garage : 15.1 sq. m (162.5 sq. ft)