

Cleaveland Road, KT6

£547,500

This share of freehold two bedroom maisonette is wonderfully located just 0.1 miles from the River Thames. There is a modern kitchen, family bathroom, a large spacious living room, a basement and a large loft with potential to extend (STPP)

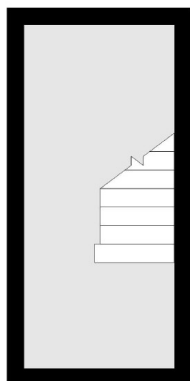
Cleaveland Road is one of Surbiton's premier river roads with everything you need on your doorstep, including the River Thames, the desirable Maple Road, Surbiton's popular high street and the mainline train station with it's fast links into London.

Features

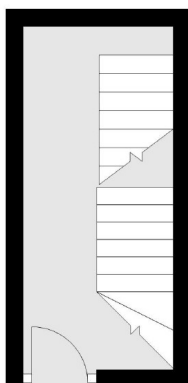
Two Double Bedrooms
Spacious Maisonette
Well Presented
Share Of Freehold
Basement and Loft
River Road

Cleaveland Road, Surbiton, KT6

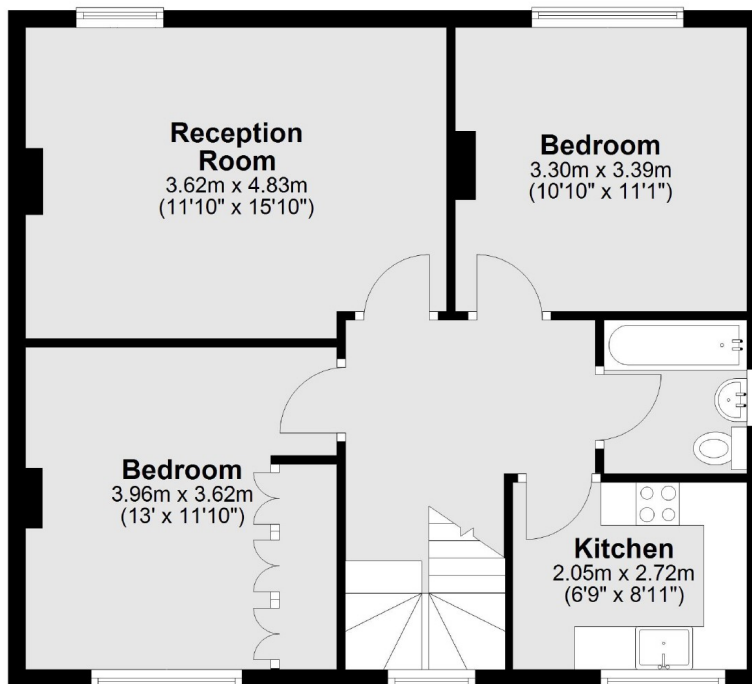
Lower Ground Floor



Ground Floor



First Floor



Total area: approx. 76.4 sq. metres (822.6 sq. feet)