



## The Avenue, KT5

£399,950

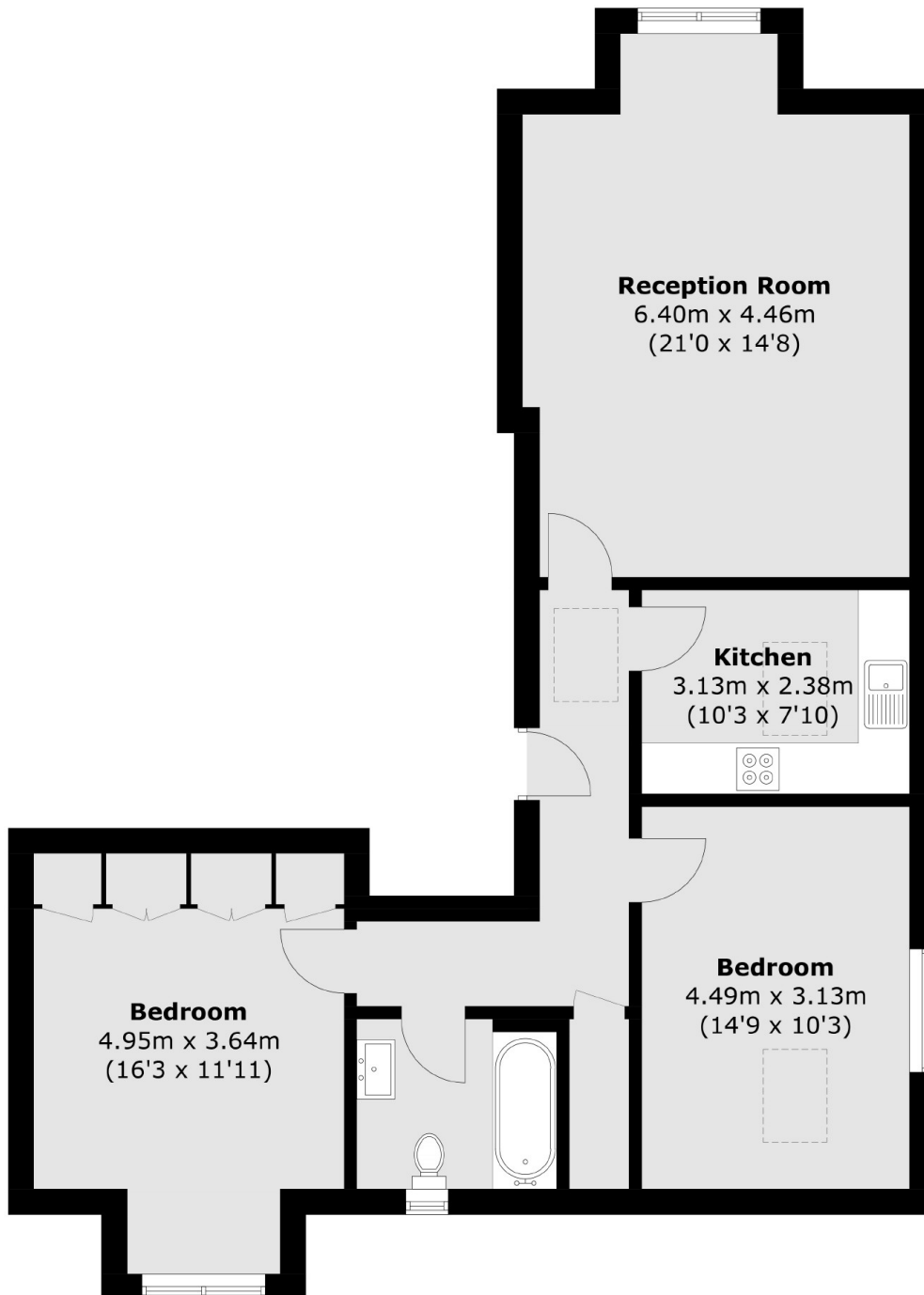
A beautiful two bedroom Victorian conversion situated in a sought after road in Surbiton. This well presented flat offers an entrance hall with generous storage, a spacious reception room with room for dining, separate kitchen, two double bedrooms and a modern bathroom. There is also the benefit of an allocated parking space.

Within 0.8 miles of Surbiton town centre and mainline train station, the shops, bars and amenities of Victoria Road are easily accessible. There are a variety of open green spaces within 500 yards and the A3 is 1 mile away.

### Features

- Victorian Conversion
- Top Floor
- Two Bedrooms
- Separate Kitchen
- Storage
- Allocated Parking

# The Avenue, Surbiton, KT5



Total area (approx.): 81.1 sq. m (872.9 sq. ft)