



## Ellerton Road, KT6

£399,950

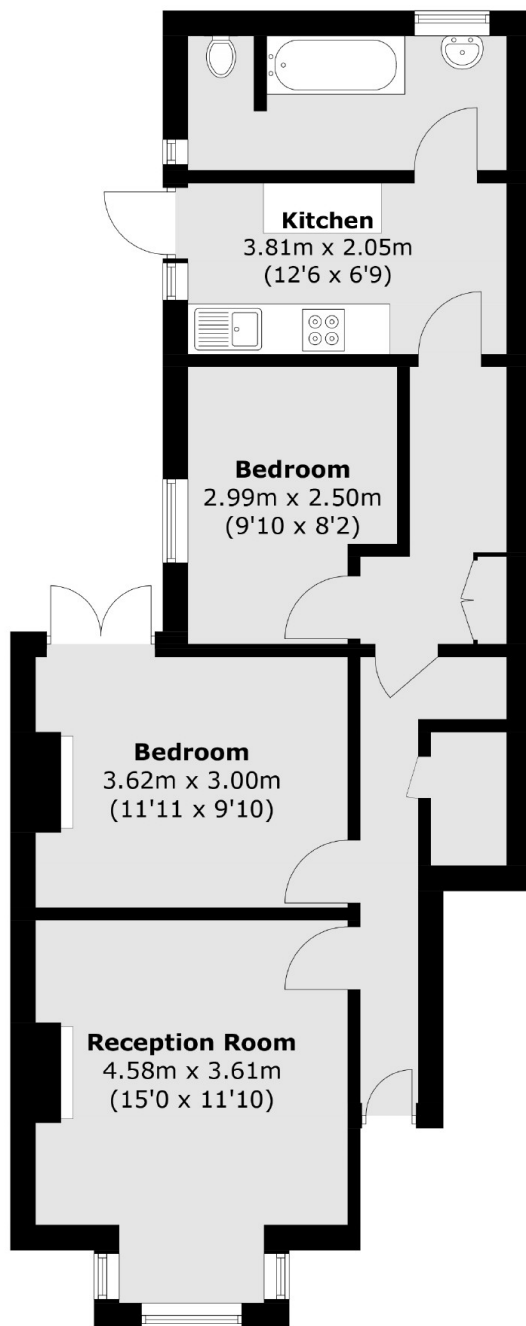
Situated on a peaceful road between Surbiton and Tolworth, this ground floor, two double bedroom maisonette has a private front and rear garden. There is no onward chain and there will be a new lease upon completion.

Ellerton Road is a peaceful residential road, approximately a mile away from both Surbiton and Tolworth town centres and train stations, with their quick links to London.

### Features

- Two Bedrooms
- Ground floor
- Private Garden
- Period Features
- No Onward Chain
- New Lease Upon Completion

# Ellerton Road, Surbiton, KT6



Total area (approx.): 62.8 sq. m (675.9 sq. ft)