



## Cranes Park, KT5

£449,950

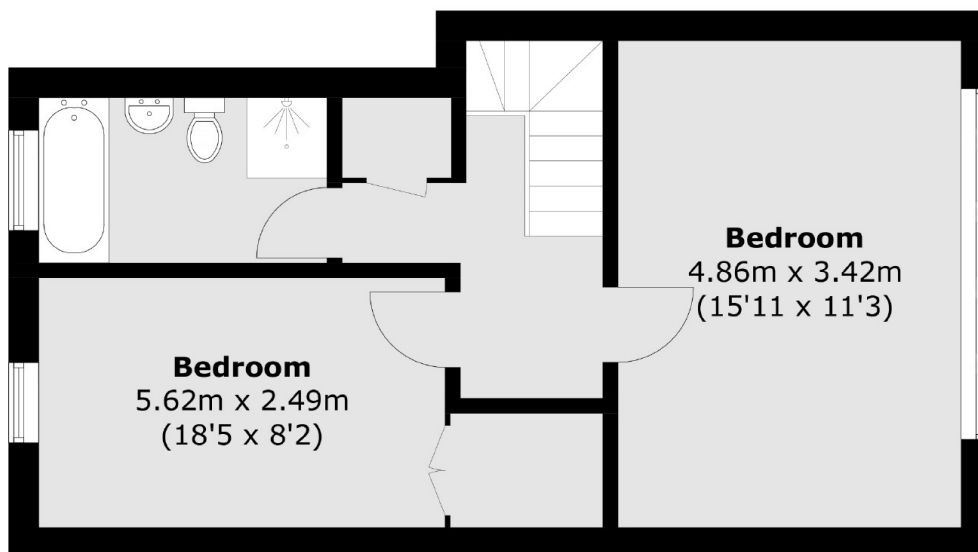
A wonderful, spacious, split level two bedroom apartment. This property has a large reception room, separate kitchen, two double bedrooms (one with fitted wardrobes, one with a walk in wardrobe) and a bathroom with separate bath and shower. Set over the top two floors, the accommodation is generous and the property is bright and airy. There are also wonderful communal gardens to the rear.

With Surbiton high street, the mainline train station (with fast train to London Waterloo), Kingston town centre and the River Thames all approximately half a mile away, Cranes Park is a sought after road and convenient place to live.

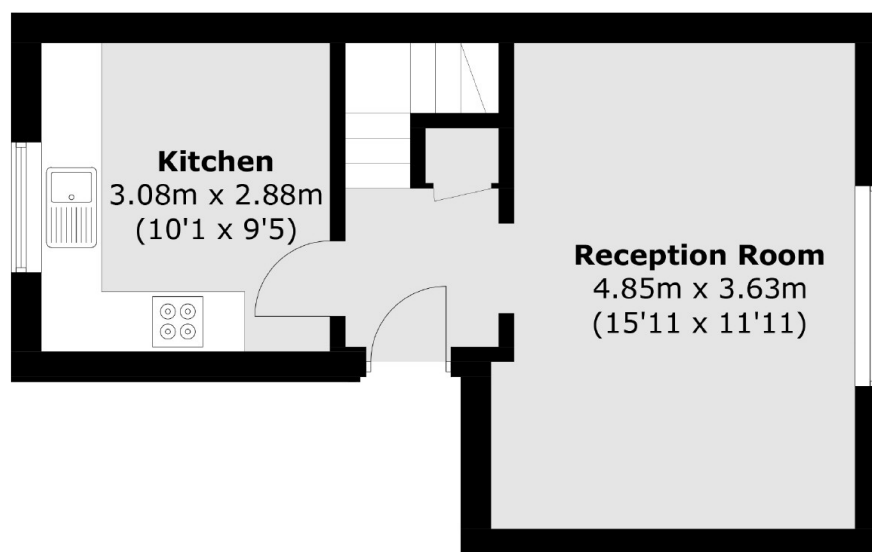
### Features

- Purpose Built
- Split level
- Two Double Bedrooms
- Communal Gardens
- No Onward Chain
- Share Of Freehold

# Cranes Park, Surbiton, KT5



## Third Floor



## Second Floor

Total area (approx.): 73.7 sq. m (793.3 sq. ft)