



Haycroft Road, KT6

£459,950

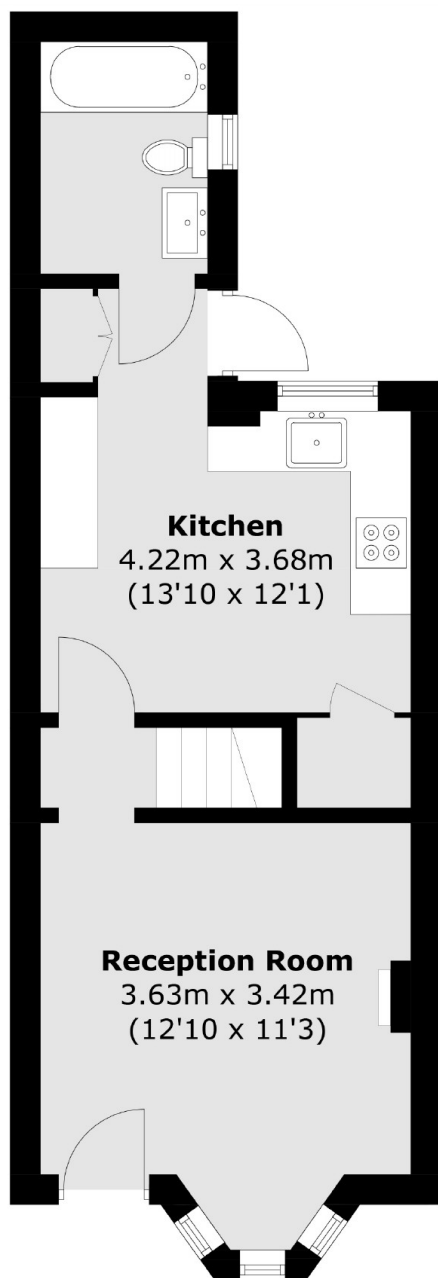
A beautiful, characterful Victorian home. This bay fronted, end of terrace property is immaculately presented, it has a bright front reception room, a spacious kitchen/dining room, two double bedrooms and a smart bathroom. To the rear there is a lovely private court yard garden.

Haycroft Road is a peaceful road, with easy access to the A3 and regular bus links in to town. Surbiton high street and the train station are conveniently just over a mile away.

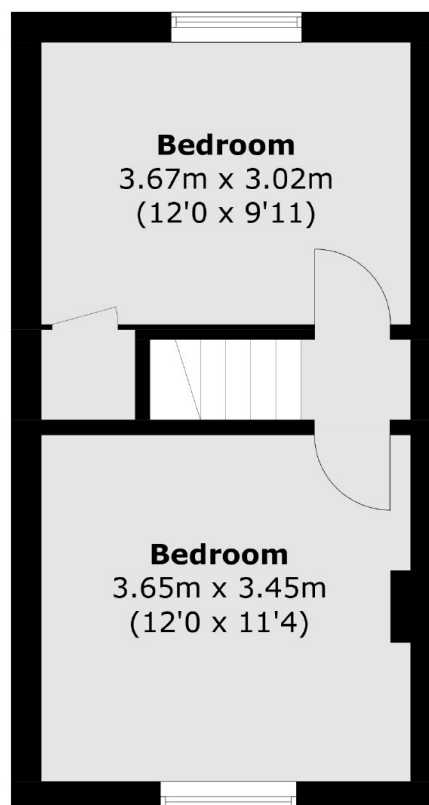
Features

- Victorian Home
- End Of Terrace
- Two Double Bedrooms
- Immaculately Presented
- Private Garden
- Convenient Location

Haycroft Road, Surbiton, KT6



Ground Floor



First Floor

Total area (approx.): 62.1 sq. m (668.4 sq. ft)