



Windmill Lane, KT6

£420,000

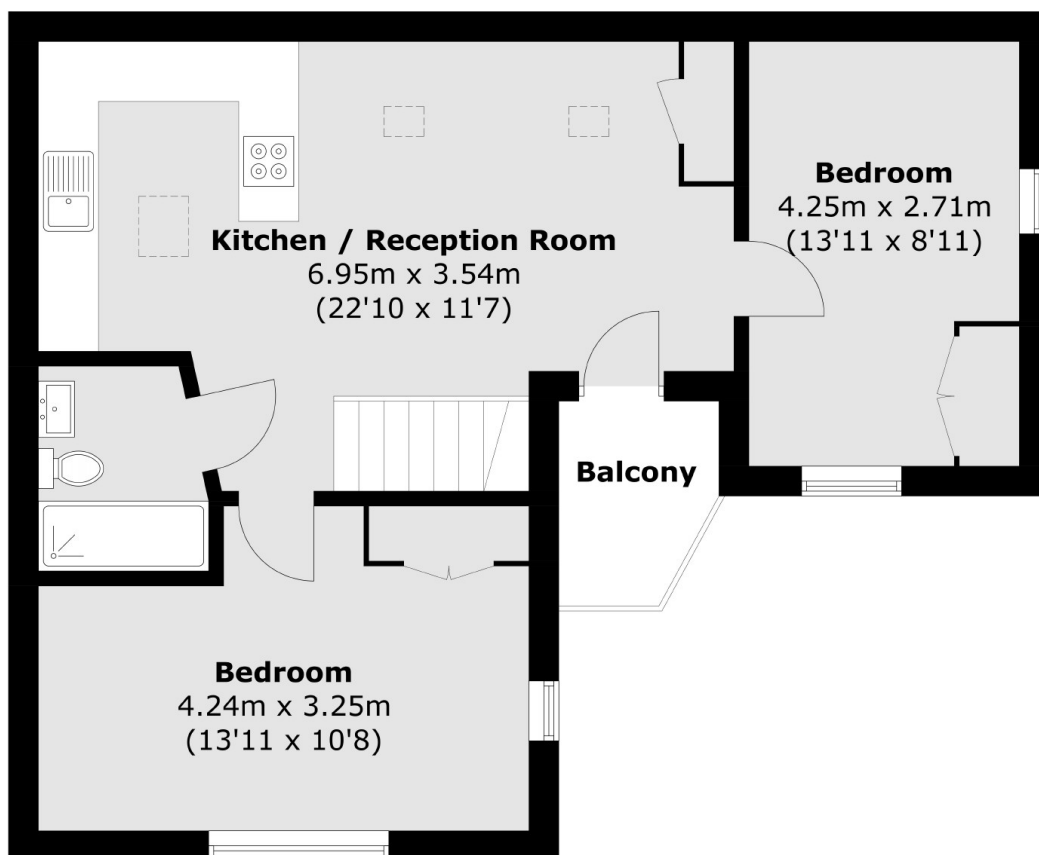
This two bedroom first floor maisonette has a spacious open plan kitchen/living room, two good sized bedrooms and a family bathroom. The property further benefits from a private balcony, a pretty private secluded garden patio with garden shed, off-street parking and a share of the freehold.

Windmill Lane is a peaceful road situated under 150 metres from Long Ditton Green and 0.2 miles from Victoria Recreation Ground. Surbiton town centre and train station are under a mile and the River Thames's tow path is under half a mile.

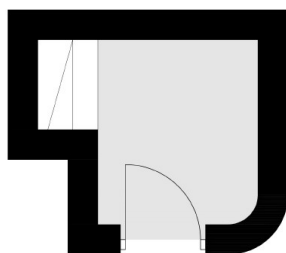
Features

- Two Double Bedrooms
- Private Balcony
- Off-Street Parking
- Private Garden
- Share Of Freehold
- No Onward Chain

Windmill Lane, Surbiton, KT6



First Floor



Ground Floor

Total area (approx.): 61.2 sq. m (658.7 sq. ft)
Balcony area (approx.): 2.9 sq. m (31.2 sq. ft)