



Beechwood Close, KT6

£3,750 Per calendar month

A detached family home in a great location. Accommodation includes five double bedrooms, two bathrooms, a fully insulated outbuilding with electricity and off-street parking.

Beechwood Close is a peaceful road in the family-friendly area of Long Ditton, approximately half a mile away from Surbiton's high street and mainline train station.

Features

- Detached
- Five Double Bedrooms
- Two Bathrooms
- Off-Street Parking
- Outbuilding With Electricity
- Desirable Location



Beechwood Close, KT6

The ground floor offers a reception room with two bay windows and a fireplace, making the room spacious and homely. There is also a modern kitchen, a downstairs bedroom and a shower room.

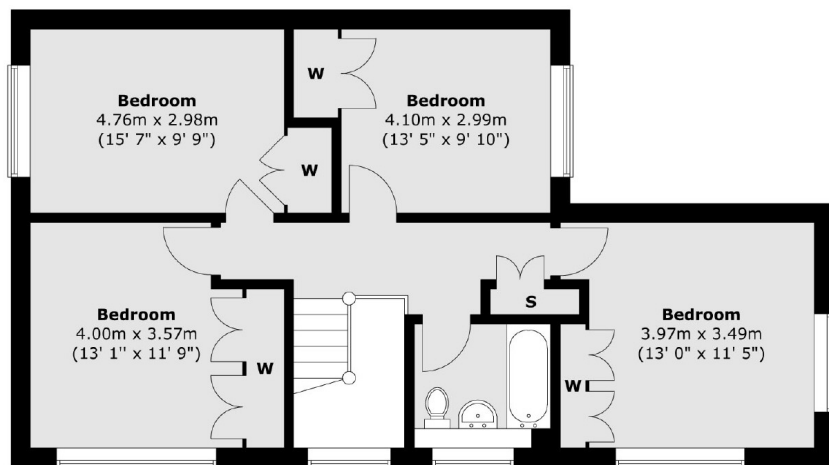
The further four double bedrooms are upstairs, along with a family bathroom. Outside, there is off-street parking and a fully insulated converted garage with electricity, perfect as a home studio or an office.

To book in a viewing, call us on 020 8390 6544, email us at surbitonlettings@dexters.co.uk or pop in to our local office and we will be happy to help.

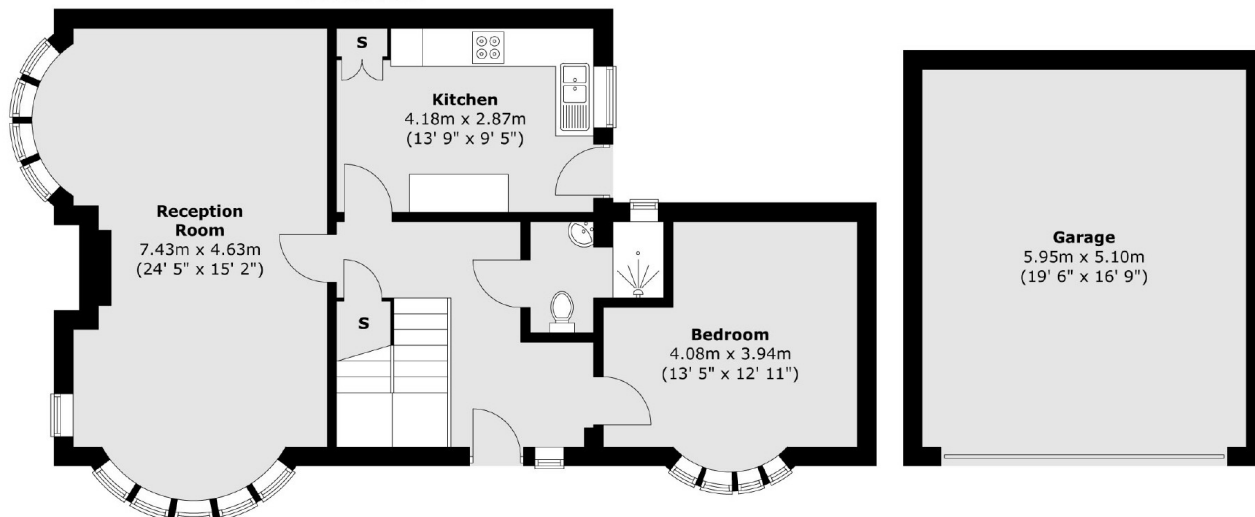


Beechwood Close, Surbiton, KT6

First Floor



Ground Floor



Total area (approx.) : 145 sq. m (1561 sq. ft)
Total garage area (approx.) : 31.3 sq. m (337 sq. ft)