



## Douglas Road, KT6

### £700,000

A beautiful, newly built, semi detached, three bedroom, two bathroom, family home. Set over three floors with a lovely private garden to the rear and off street parking to the front. This property is being sold with no onward chain.

Douglas Road is a peaceful residential road, with easy access to the A3 and approximately a mile away from both Surbiton and Tolworth town centres, with their high streets and mainline train stations.

### Features

- Newly Built
- Semi-Detached
- Three Bedrooms
- Two Bathrooms
- Off Street Parking
- No Onward Chain





## Douglas Road, KT6

This property has a wonderful, bright, open plan layout, offering top specification integrated appliances in the kitchen, under floor heating throughout, and plenty of room for dining space and living/relaxing space.

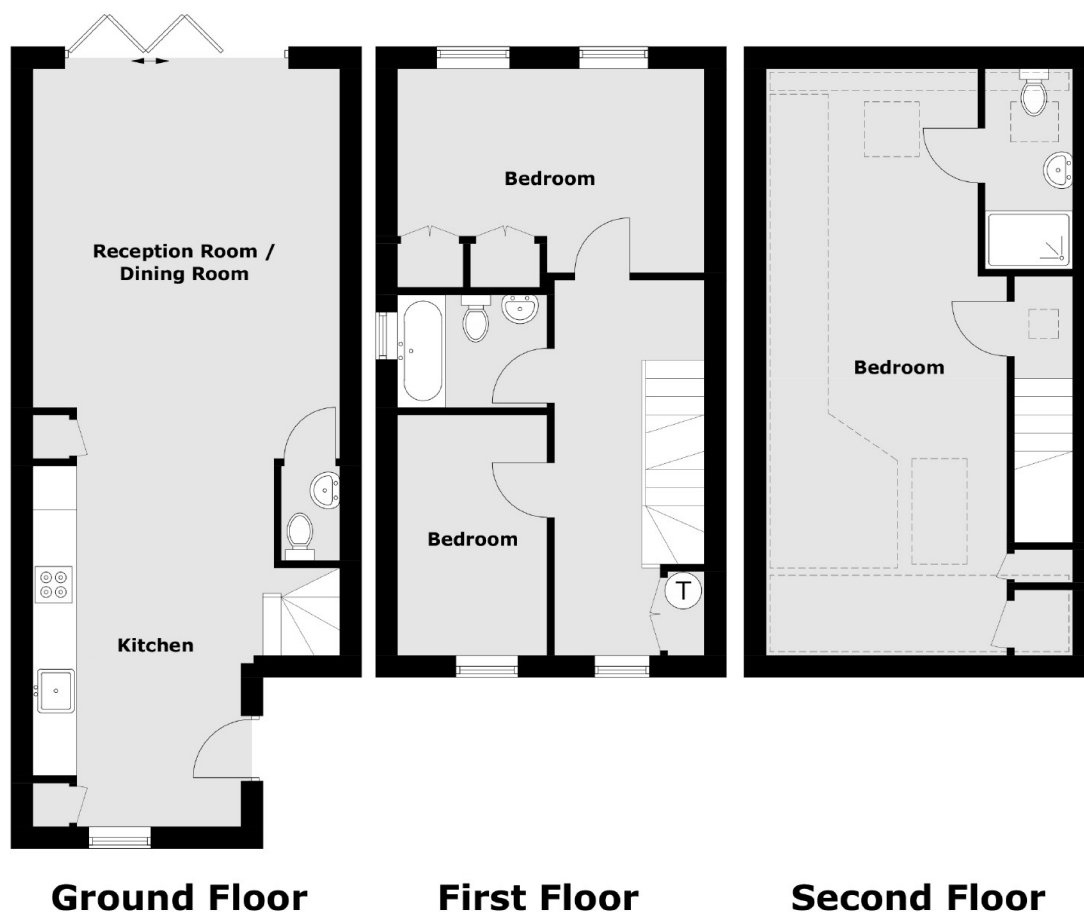
On the first floor there are two spacious and contemporary double bedrooms, large built in wardrobes and a three piece family bathroom suite. The second floor has a bright master bedroom, with its own ensuite bathroom.

Externally there is a well landscaped 80ft garden, accessed via bi folding doors, and off street parking.





# Douglas Road, Surbiton, KT6



Total area (approx.): 107.82 sq. m (1,161 sq. ft)

## Dexters

Surbiton  
2 Claremont Road  
Surbiton  
KT6 4QU  
Sales  
020 8390 3939

Energy Rating: E. We aim to make our particulars both accurate and reliable. However they are not guaranteed; nor do they form part of an offer or contract. If you require clarification on any points then please contact us, especially if you're traveling some distance to view. Please note that appliances and heating systems have not been tested and therefore no warranties can be given as to their good working order.

 **RICS** | Regulated  
Estate Agent  
and Letting Agent

[dexters.co.uk](https://www.dexters.co.uk)