



Douglas Road, KT6

£800,000

Offers in excess of £800,000. A beautiful, newly built, semi detached, three bedroom, two bathroom, family home. Set over three floors with a lovely private garden to the rear and off street parking to the front.

Douglas Road is a peaceful residential road, with easy access to the A3 and approximately a mile away from both Surbiton and Tolworth town centres, with their high streets and mainline train stations.

Features

- Newly Built
- Semi-Detached
- Three Floors
- Three Bedrooms
- Two Bathrooms
- Off Street Parking



Douglas Road, KT6

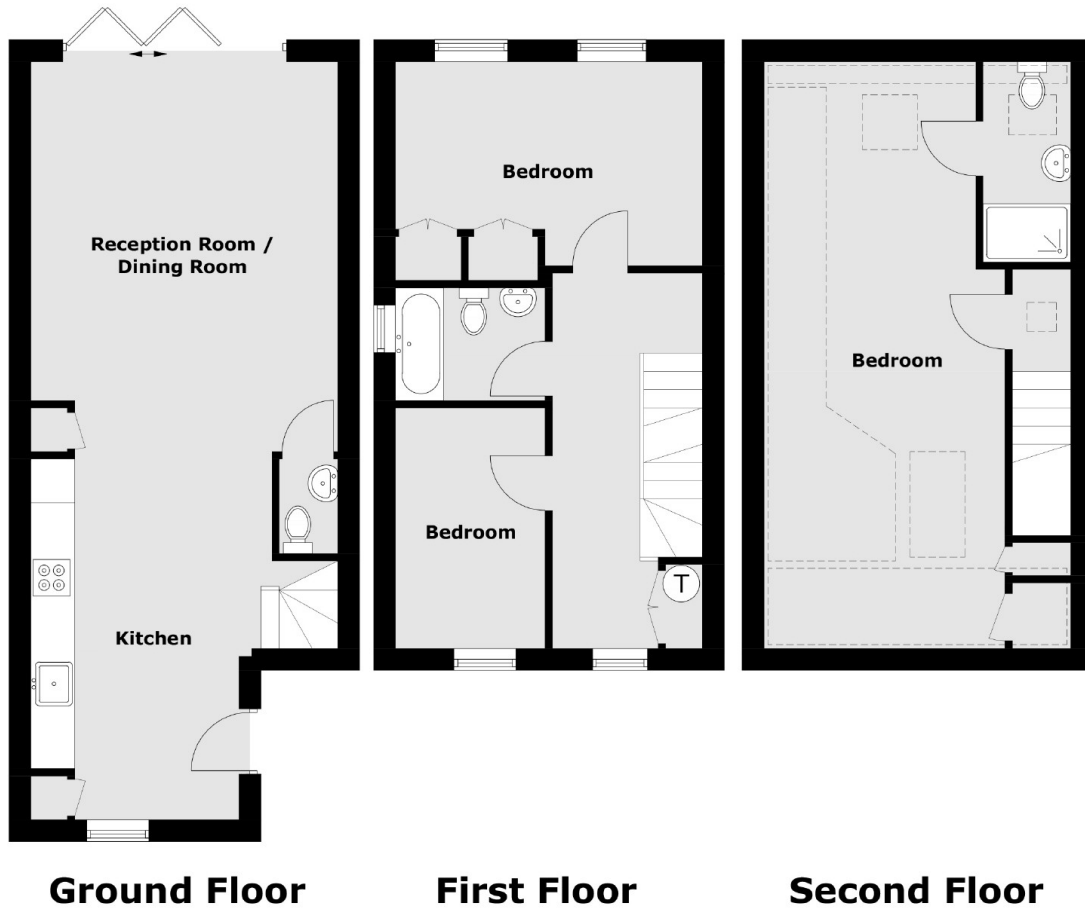
This property has a wonderful, bright, open plan layout, offering top specification integrated appliances in the kitchen, under floor heating throughout, and plenty of room for dining space and living/relaxing space.

On the first floor there are two spacious and contemporary double bedrooms, large built in wardrobes and a three piece family bathroom suite. The second floor has a bright master bedroom, with its own ensuite bathroom.

Externally there is a well landscaped 80ft garden, accessed via bi folding doors, and off street parking.



Douglas Road, Surbiton, KT6



Total area (approx.): 107.82 sq. m (1,161 sq. ft)