



The Crescent, KT6

£385,000

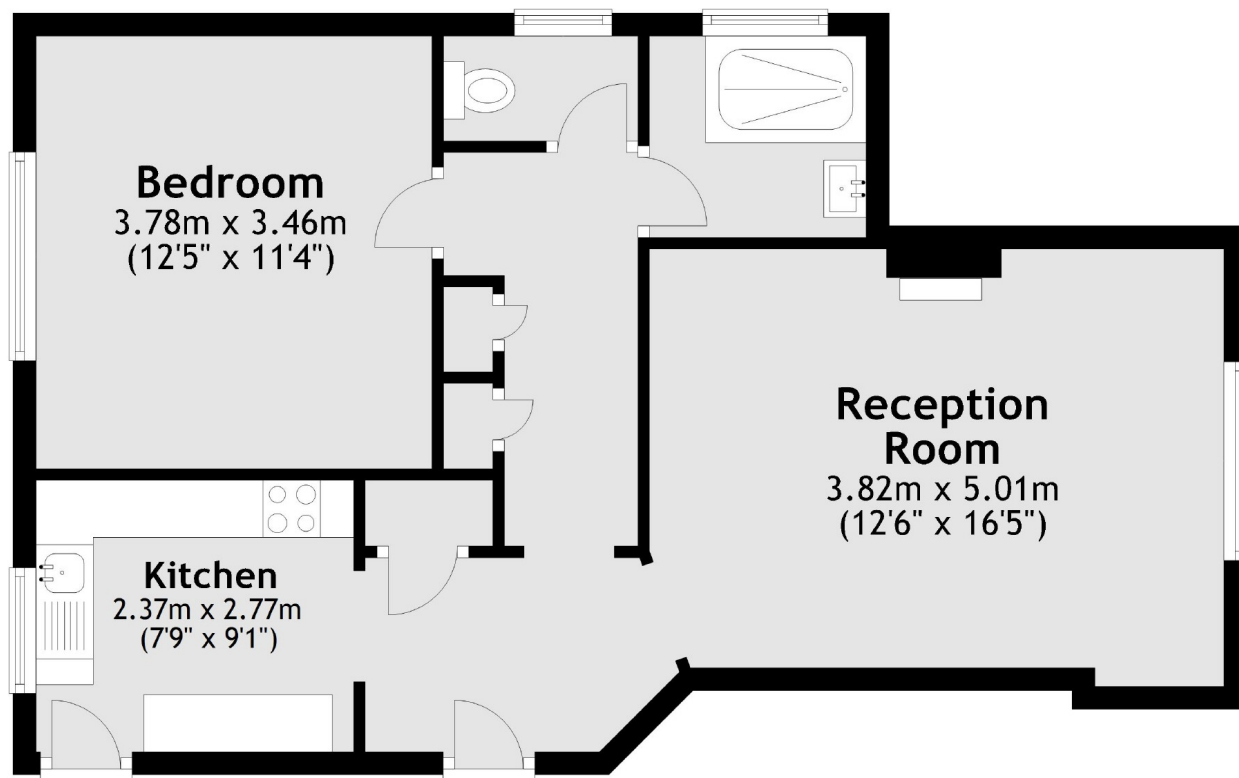
This beautiful, art deco apartment is ideally located, well presented and full of original character. Accommodation includes a bright double bedroom, reception room with period wooden flooring, communal gardens and off-street parking.

The Crescent is nestled in the heart of Surbiton with everything you need on your doorstep, including the high street and the mainline train station with its quick links to London Waterloo.

Features

- One Double Bedroom
- Communal Gardens
- Off-Street Parking
- No Onward Chain
- Share Of Freehold
- Central Location

The Crescent, Surbiton, KT6



Total area: approx. 55.4 sq. metres (596.8 sq. feet)