



Southborough Road, KT6

£1,350,000

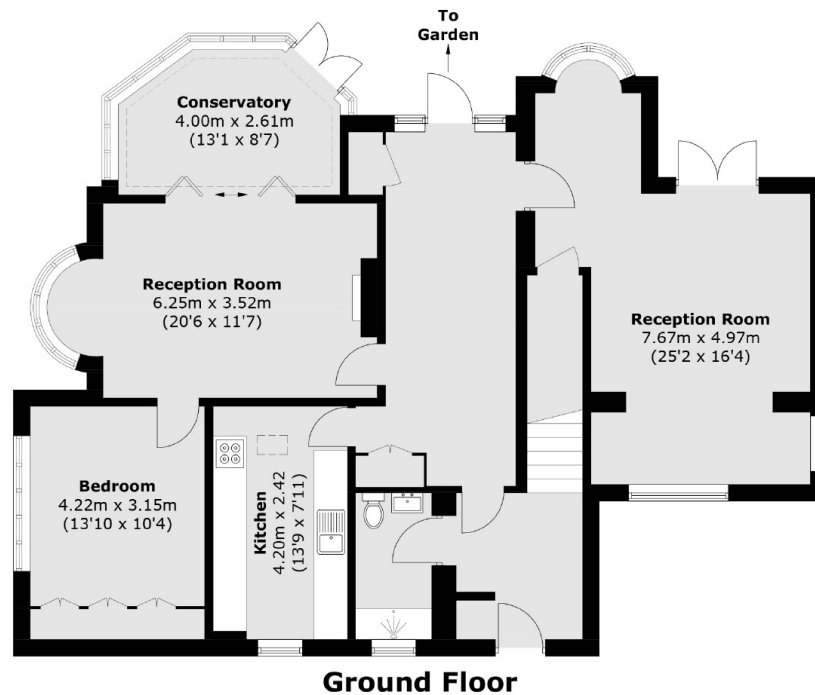
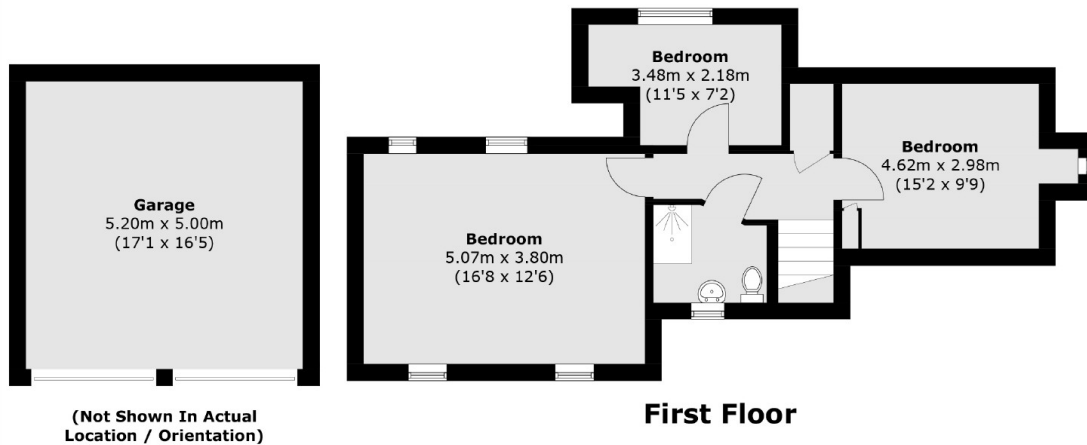
A rarely available detached home located on a large plot of land in a highly sought after area. There is plenty of scope to extend, renovate and develop the property (STPP) and already has detailed planning consent for the redevelopment of the site to build two new houses.

Southborough Road is a highly sought-after location, approximately a mile away from Surbiton town centre where you will find the mainline train station and popular high street.

Features

- Four bedrooms
- Detached
- Private Road Location
- Potential to Extend (STPP)
- Big Plot
- Garage

Southborough Road, Surbiton, KT6



Total area (approx.): 163.8 sq. m (1,763.2 sq. ft)
Garage area (approx.): 26.0 sq. m (279.9 sq. ft)