



Greenwood Close, KT7

£650,000

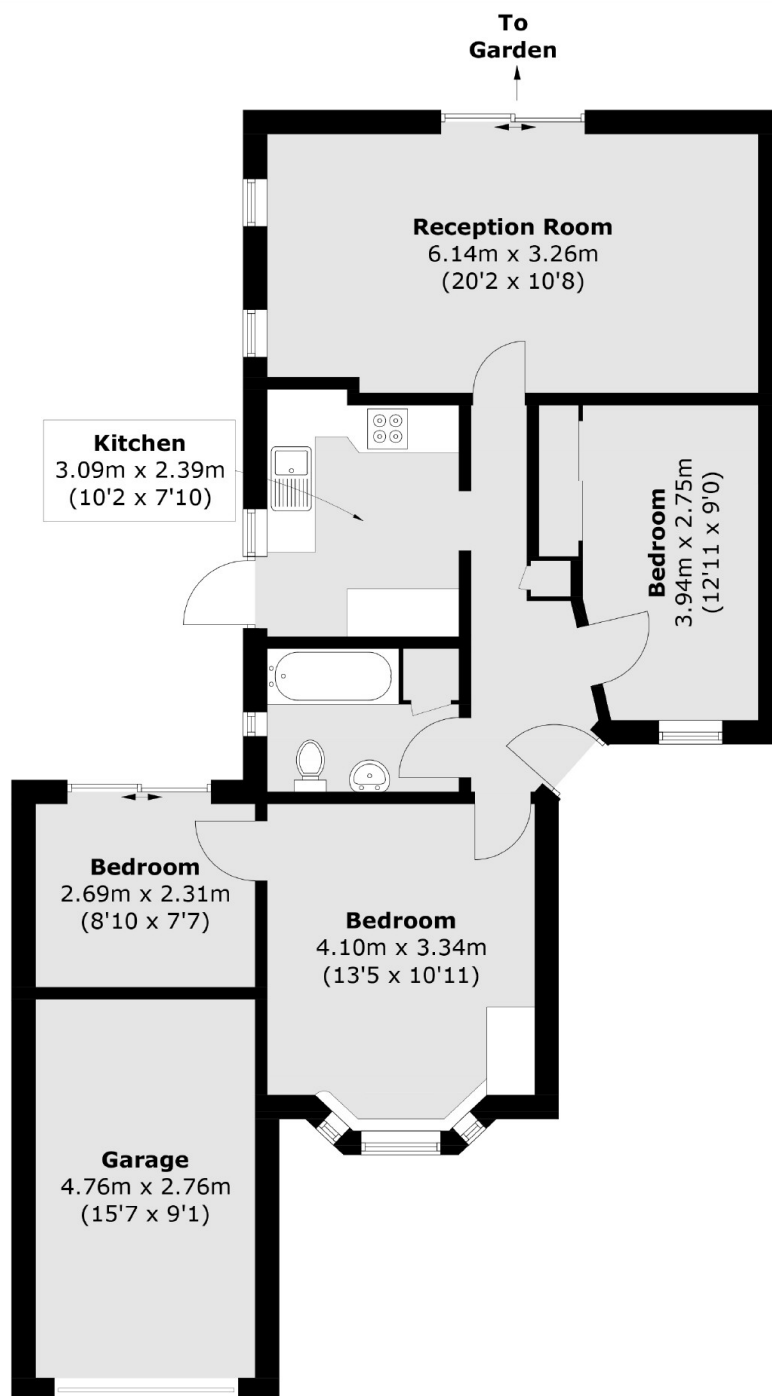
This rarely available semi detached bungalow is located in a peaceful cul-de-sac. The property is in need of renovation and has scope to extend further (STPP). There are three bedrooms, a large reception room with views over the garden, separate kitchen and a garage with off street parking.

This property is located 0.9 Miles from both Thames Ditton and Hinchley Wood train stations with easy links in to London Waterloo. It is in the catchment for the fantastic Hinchley Wood School and Thames Ditton and Surbiton town centres are also within a mile.

Features

- Three Bedroom Bungalow
- Scope to Develop
- Front and Rear Garden
- Off Street Parking
- Garage
- No Onward Chain

Greenwood Close, Thames Ditton, KT7



Total area (approx.): 69.5 sq. m (748.1 sq. ft)
Garage: 13.1 sq. m (141.0 sq. ft)