



## Parklands, KT5

£290,000

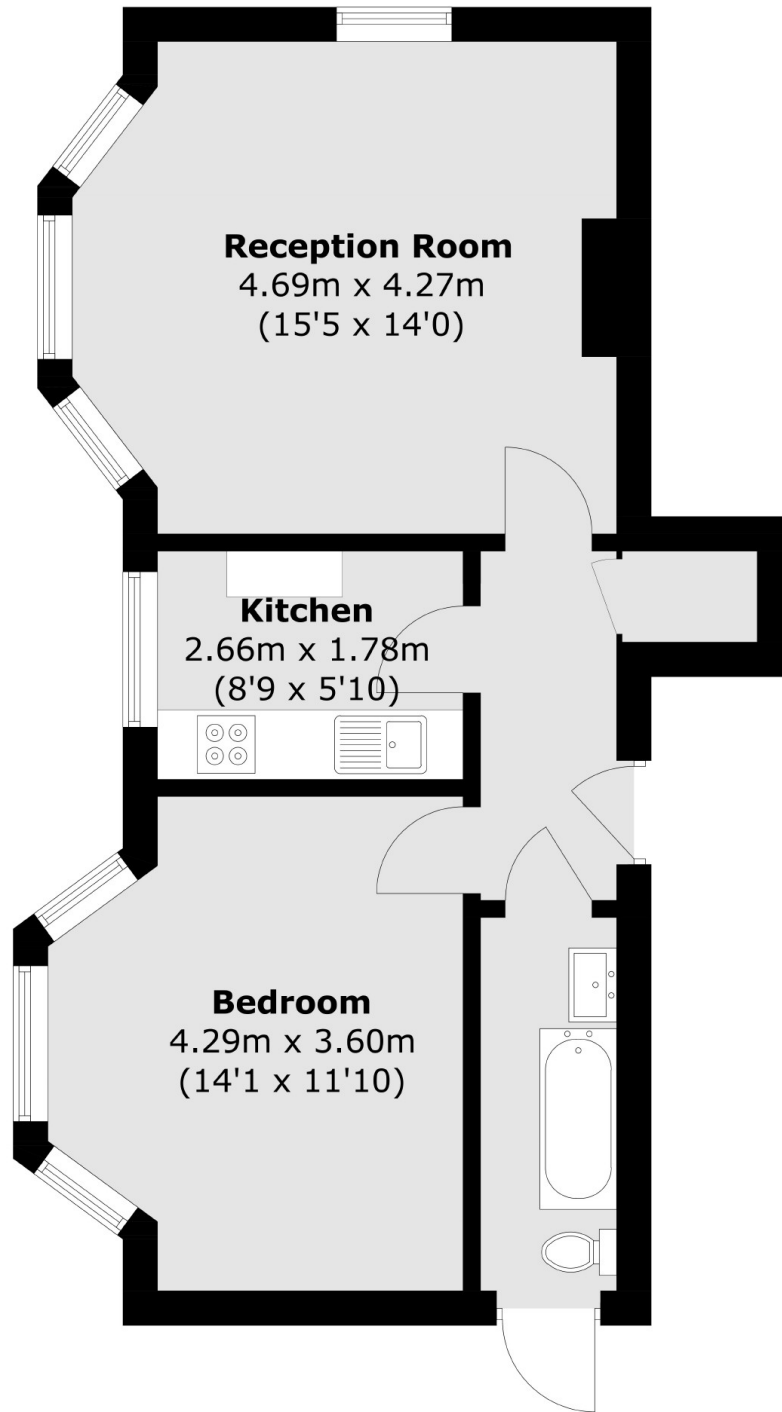
This one bedroom period conversion apartment is set in an imposing detached Victorian Villa on a peaceful road. The property has high ceilings, a bay fronted reception room and large bedroom, separate kitchen, large communal gardens and a long lease.

Parklands is a peaceful sought after road just half a mile from Surbiton Station and high street with its fast trains into London, and its selection of shops, cafes, bars and restaurants.

### Features

- One Bedroom
- Period Conversion
- Imposing Victorian Villa
- Long Lease
- Communal Gardens
- Tree Lined Road

# Parklands, Surbiton, KT5



Total area (approx.): 48.5 sq. m (522.0 sq. ft)