



Portsmouth Avenue, KT7

£999,950

A brand new, immaculately finished, split level apartment. This large luxury three bedroom, three bathroom property has a private garden with direct access and two allocated off street parking spaces with an electric charging station.

Portsmouth Avenue is approximately half a mile away from Thames Ditton train station and just over a mile from Surbiton High Street and the fast train to Waterloo. Thames Ditton Village is nearby as is the River Thames.

Features

- New Build Apartment
- Split Level
- Three Double Bedrooms
- Three Bathrooms
- Private Garden
- Two Allocated Parking Spaces



Portsmouth Avenue, KT7

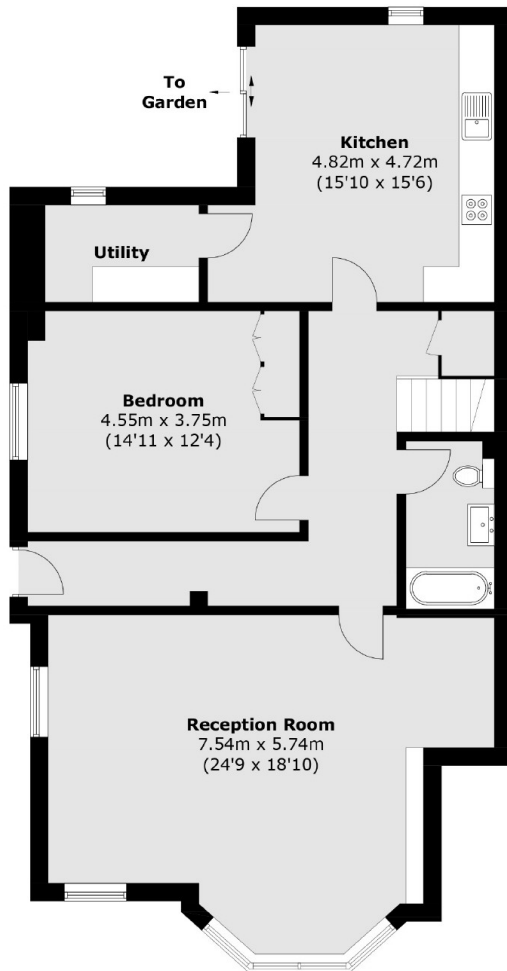
This larger than average apartment is situated on the ground and first floor. On the ground floor there is a welcoming entrance hall, that leads to a large reception room. There is one double bedroom, the main family bathroom, a fully integrated eat in kitchen and a utility room too.

Upstairs there are two double bedrooms, both of which have fitted wardrobes and en-suite bathrooms.

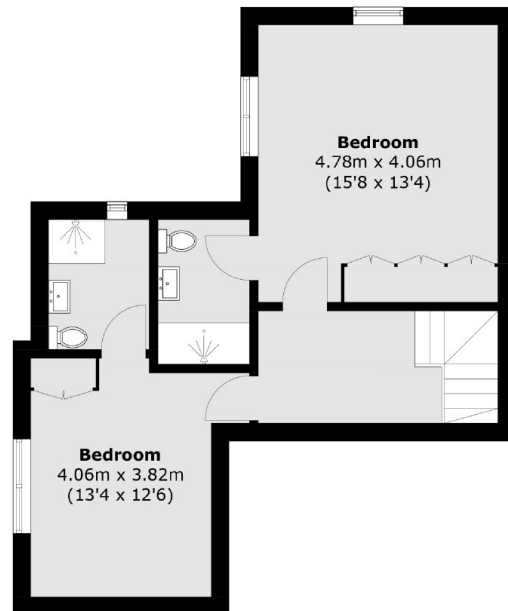
Externally there are two allocated off street parking spaces with an electric charging point and a lovely secluded private garden which is directly accessible from the kitchen.



Portsmouth Avenue, Thames Ditton, KT7



Ground Floor



First Floor

Total area (approx.): 150.9 sq. m (1,624.2 sq. ft)