



**Manor Road North, KT7**

**£925,000**

**Dexters**



## Manor Road North, KT7

This expansive semi-detached family home has four bedrooms, one bathroom and a large open plan kitchen, dining and family room, as well as a wrap around garden with a separate home office and off-street parking.

On the ground floor you enter through an airy and spacious hallway, allowing you to view the light open plan dining room, kitchen, family room and w/c, as well as a separate cosy sitting room.

On the first floor, there are four bedrooms ranging in size, a family bathroom and scope to extend into the loft (STPP).

Outside is a generously sized garden which includes a separate home office. To the front, there is off-street parking for several cars. To book in a viewing, please do call us on 0208 390 3939.

This property is located 0.6 miles from Hinchley Wood train station with easy links in to London Waterloo. It is in the catchment for the fantastic Hinchley Wood School and Thames Ditton and Surbiton town centres are also nearby.

### Features

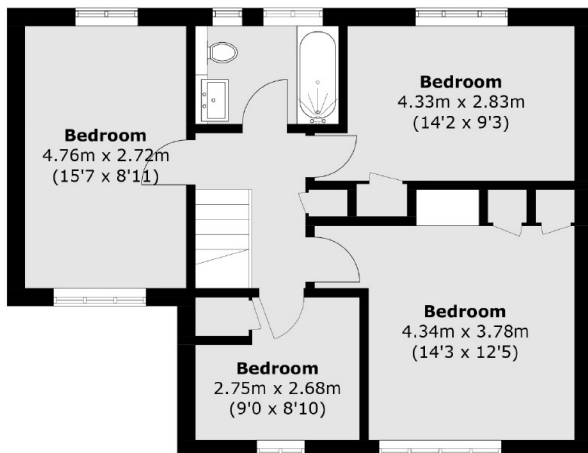
- Off-Street Parking
- Semi-Detached
- Four Bedrooms
- Home Office
- Open Plan Living
- Good Location





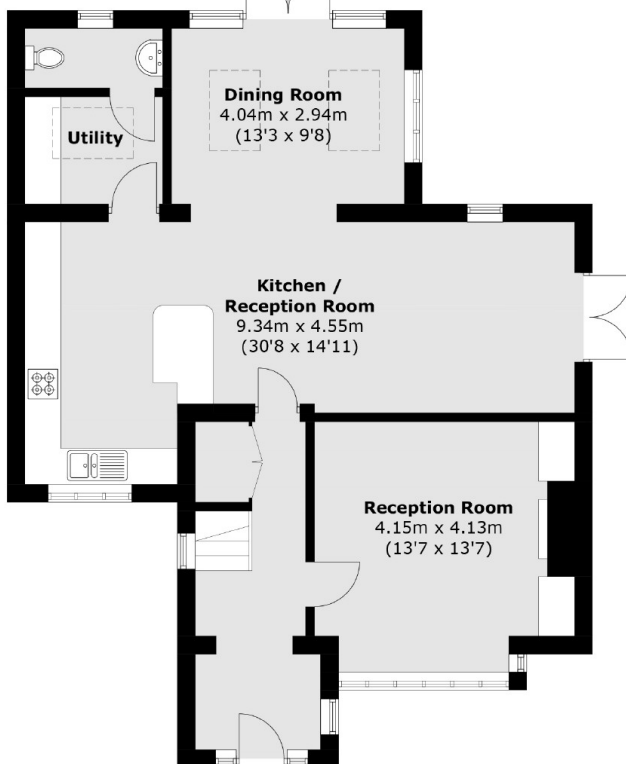


# Manor Road North, Thames Ditton, KT7



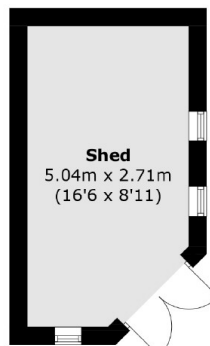
## First Floor

To Garden



## Ground Floor

Total area (approx.) : 140.5 sq. m (1,512.3 sq. ft)  
Shed : 12.9 sq. m (138.8 sq. ft)



(Not Shown In Actual Location / Orientation)