



Portsmouth Road, KT7

£399,950

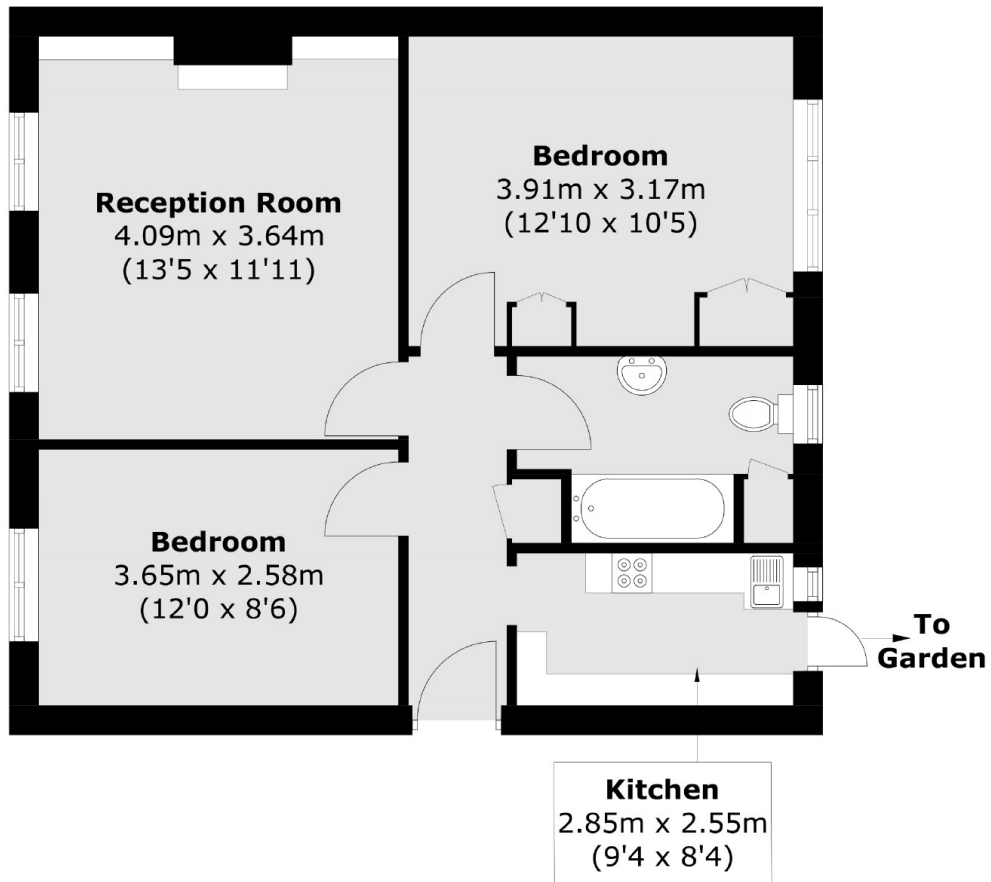
A well presented two double bedroom ground floor apartment. This property offers a separate kitchen with direct access to a private patio, a bright and airy lounge, two double bedrooms and a bathroom. The property also has a garage. The river Rythe runs through the landscaped communal gardens.

Rythe Court is on Portsmouth Road, which runs along the River Thames and is conveniently just over a mile away from Surbiton's popular town centre and close to Thames Ditton village.

Features

- Ground Floor
- Two Double Bedrooms
- Communal Gardens
- Garage
- Permit Parking
- Well Presented

Portsmouth Road, Thames Ditton, KT7



Total area (approx.): 52.2 sq. m (561.9 sq. ft)