



## St. Mark's Hill, KT6

£525,000

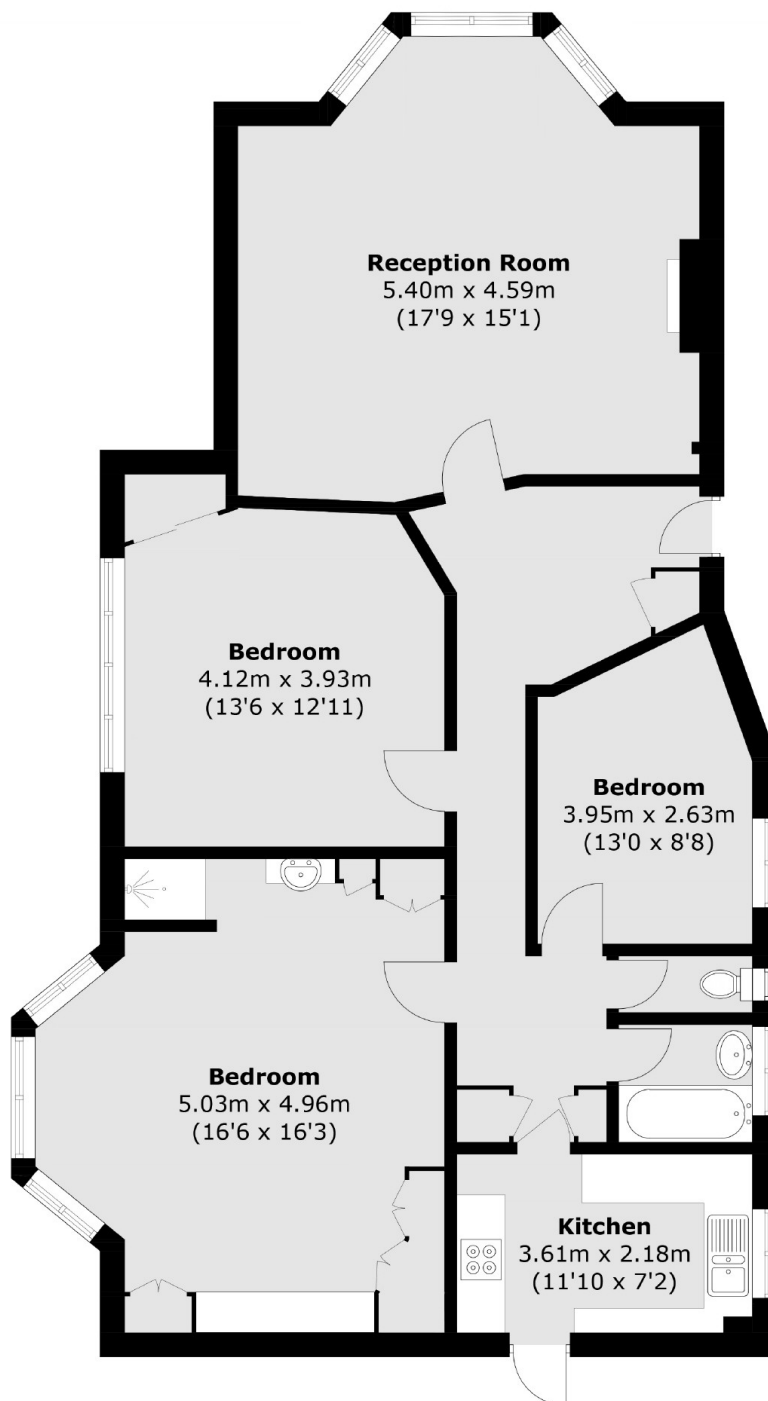
This large, bright and airy three double bedroom apartment is located in central Surbiton. The property is nearly 1200 sq ft, has a large reception room, modern separate kitchen, a bathroom, has en suite shower in the main bedroom, is lift serviced and has south-facing gardens.

Hill Court is nestled in the heart of Surbiton, with the buzz of Surbiton high street and the convenience of the mainline train station with its fast train in to London Waterloo right on the doorstep.

### Features

- Three Double Bedrooms
- South Facing
- Central Location
- Communal Gardens
- Share of freehold
- No Onward Chain

# St. Mark's Hill, Surbiton, KT6



Total area (approx.): 111.0 sq. m (1,194.8 sq. ft)