



Claremont Gardens, KT6

£440,000

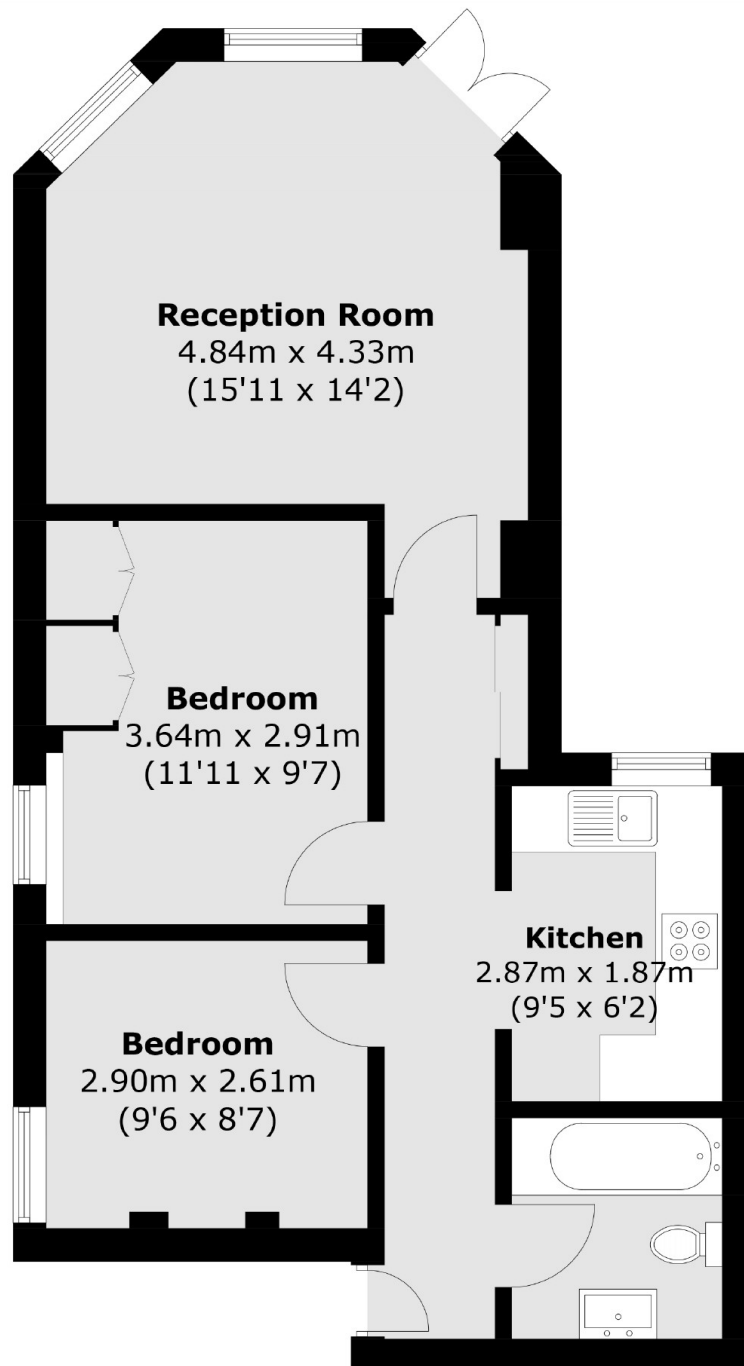
This ground floor apartment is offered with a share of the freehold and includes a reception room with French doors on to the communal garden, and two bedrooms (with fitted wardrobes in the main bedroom).

Claremont Gardens is in the heart of Surbiton with everything you need approximately half a mile away, including the desirable Maple Road, the River Thames, Surbiton's high street and the mainline train station.

Features

- Ground Floor
- Two Bedrooms
- Fitted Wardrobes
- Communal Garden
- Share Of Freehold
- Central Location

Claremont Gardens, Surbiton, KT6



Total area (approx.): 54.8 sq. m (589.8 sq. ft)