



King Charles Crescent, KT5

£699,950

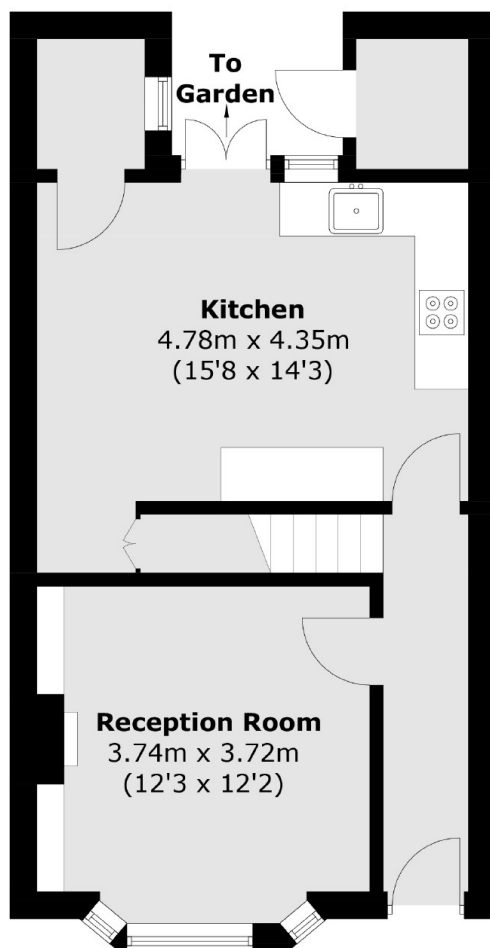
This Period terrace house is in a great location and has period features throughout. The property has a front reception room, an open plan kitchen/dining room, two double bedrooms, a bathroom and a pretty private garden with decking area, lawn and storage shed.

King Charles Crescent is just over half a mile away from Surbiton town centre, offering the mainline train station and a variety of shops, bars and restaurants.

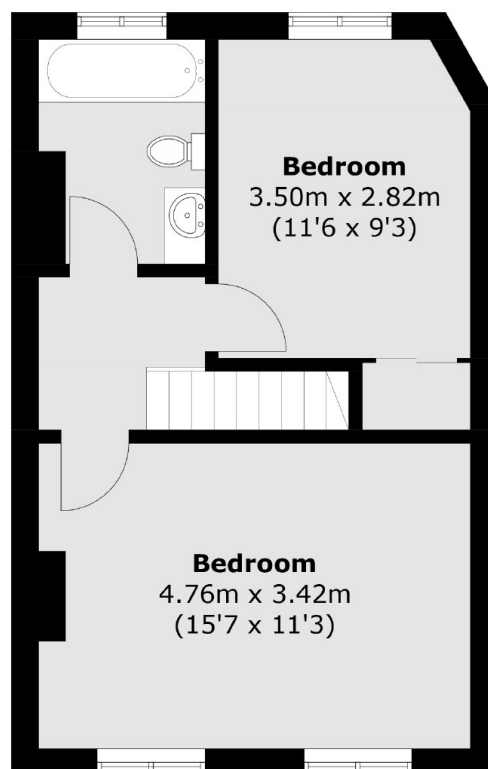
Features

- Victorian House
- Two Double Bedrooms
- Two reception rooms
- Central Location
- Period Features
- Private Garden

King Charles Crescent, Surbiton, KT5



Ground Floor



First Floor

Total area (approx.): 78.5 sq. m (845.0 sq. ft)
Outside Store : 1.8 sq. m (19.4 sq. ft)