



Stevens Lane, KT10

£4,950 Per calendar month

With three reception rooms, a utility room, four bedrooms, four bathrooms, a large private rear garden and off-street parking to the front, this spacious property makes the perfect family home.

Stevens Lane is in Claygate, offering easy access to the A3 and just over a mile away from Claygate train station and the village, with gastro pubs, excellent restaurants and local shops.

Features

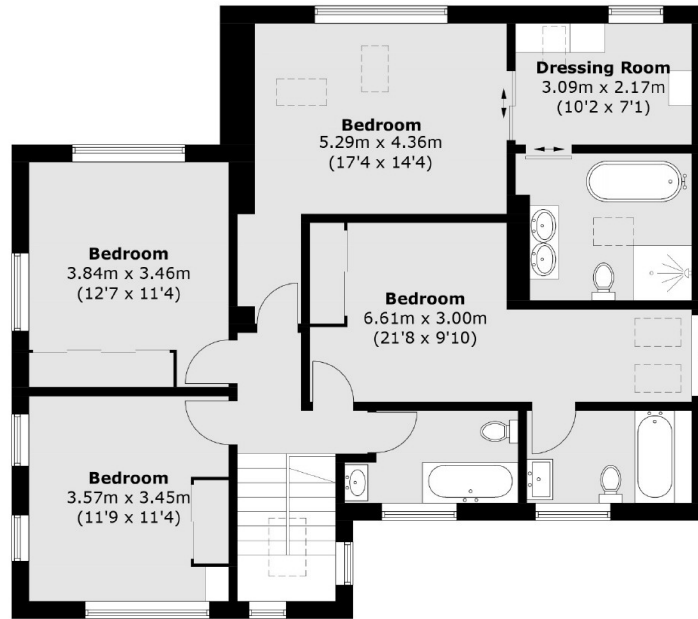
- Three Reception Rooms
- Utility Room
- Four Bedrooms
- Four Bathrooms
- Off-Street Parking
- Great Location



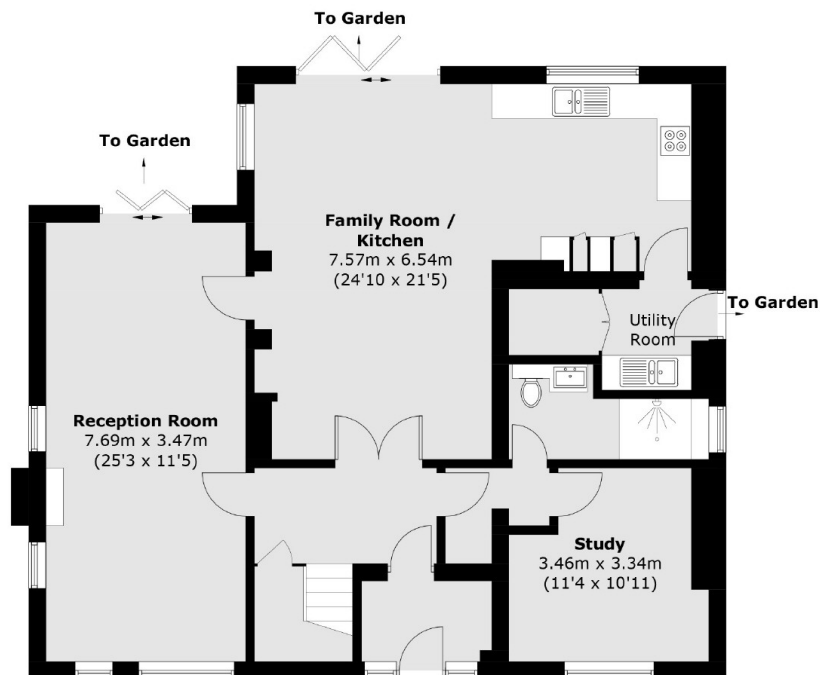
Stevens Lane, KT10



Stevens Lane, Esher, KT10



First Floor



Ground Floor

Total area (approx.): 200.4 sq. m (2,157.0sq. ft)