



Parkside Crescent, KT5

£749,950

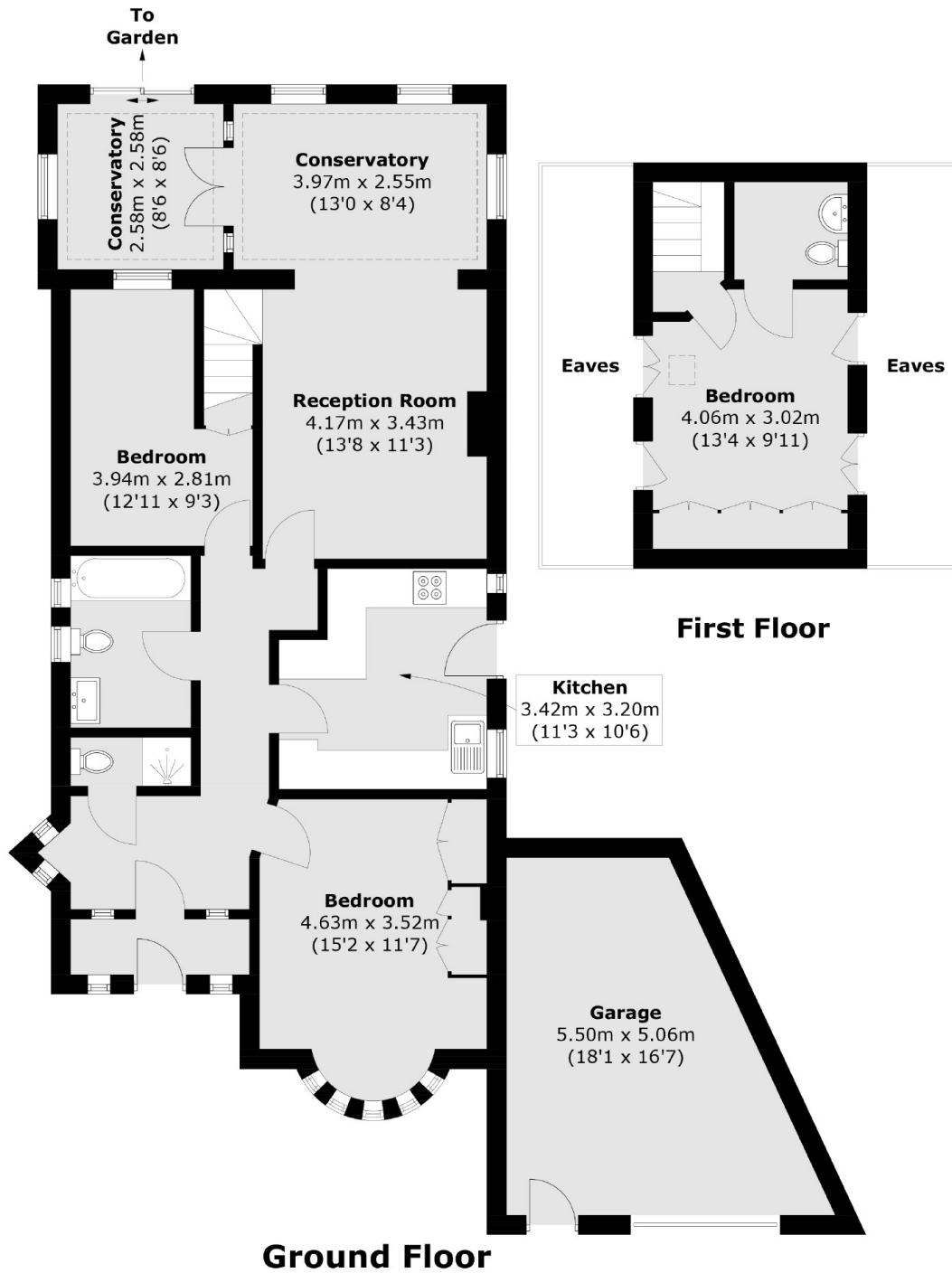
A spacious bungalow situated on a large plot with plenty of development opportunity. The property has off street parking for several cars to the front, a garage to the side and a large garden to the rear. Internally there are three bedrooms, two bathrooms, a kitchen and a large reception room with conservatory.

Parkside Crescent has easy access to the A3 and the Hogsmill River with open green space. If you need to get in to London, Berrylands train station is just over half a mile away.

Features

- Large Plot
- Development Opportunity
- Three Bedrooms
- Two Bathrooms
- Off-Street Parking
- Garage

Parkside Crescent, Surbiton, KT5



Total area (approx.): 109.7 sq. m (1,180.8 sq. ft)
(Excluding Eaves)

Garage area (approx.): 20.9 sq. m (225.0 sq. ft)