



## Ash Tree Close, KT6

£425,000

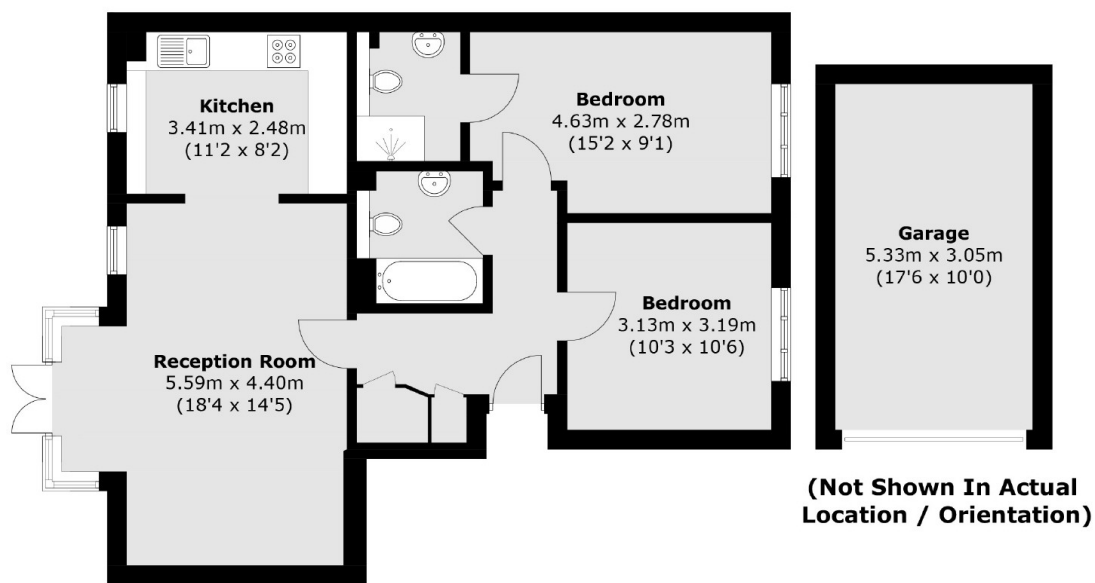
This spacious two bedroom apartment is located on the ground floor and has a large reception room with an open plan kitchen, two double bedrooms, two bathrooms, a garage and off street parking.

Ash Tree Close has easy access to the A3 and offers regular bus routes in to Surbiton and Kingston town centres. The nearest train station is Surbiton, which is 0.8 miles away and offers quick links to London.

### Features

- Two Double Bedrooms
- Two Bathrooms
- Allocated Parking
- Double Reception room
- Long Lease
- Communal Gardens

# Ash Tree Close, Surbiton, KT6



Total area (approx.): 70.4 sq. m (757.8 sq. ft)  
Garage area (approx.): 16.3 sq. m (175.4 sq. ft)