



## Cranes Park, KT5

£325,000

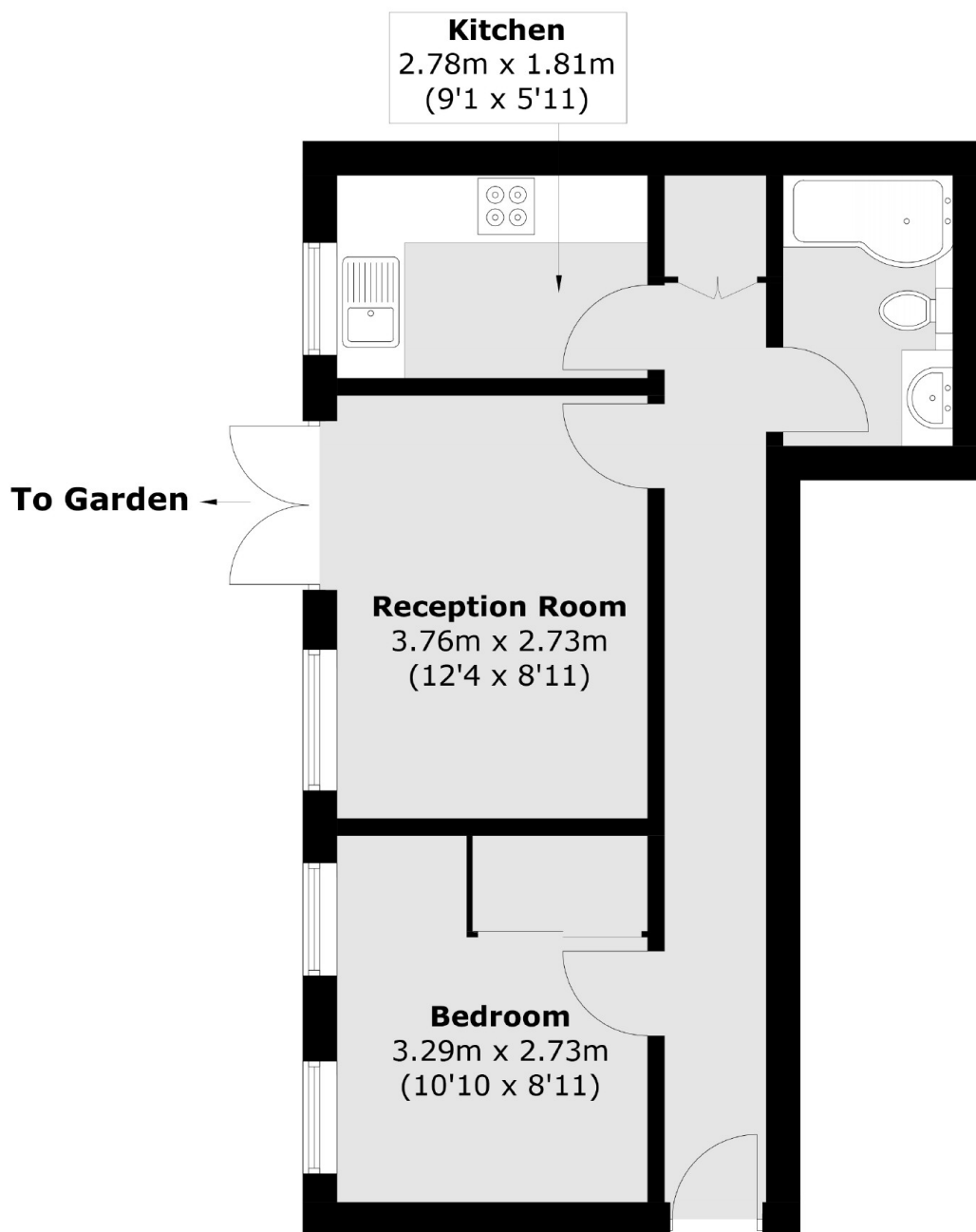
This ground floor garden apartment is offered to the market with no onward chain. There is a double bedroom, reception room with doors out on the beautiful and mature communal garden, separate kitchen and an allocated off-street parking space.

With Surbiton high street, the mainline train station, Kingston town centre and the River Thames all approximately half a mile away, Cranes Park is a sought after road and convenient place to live.

### Features

- Ground Floor
- One Double Bedroom
- Communal Garden
- Off-Street Parking
- Long Lease
- No Onward Chain

# Cranes Park, Surbiton, KT5



Total area (approx.): 38.9 sq. m (418.7 sq. ft)