



Avenue Elmers, KT6

£375,000

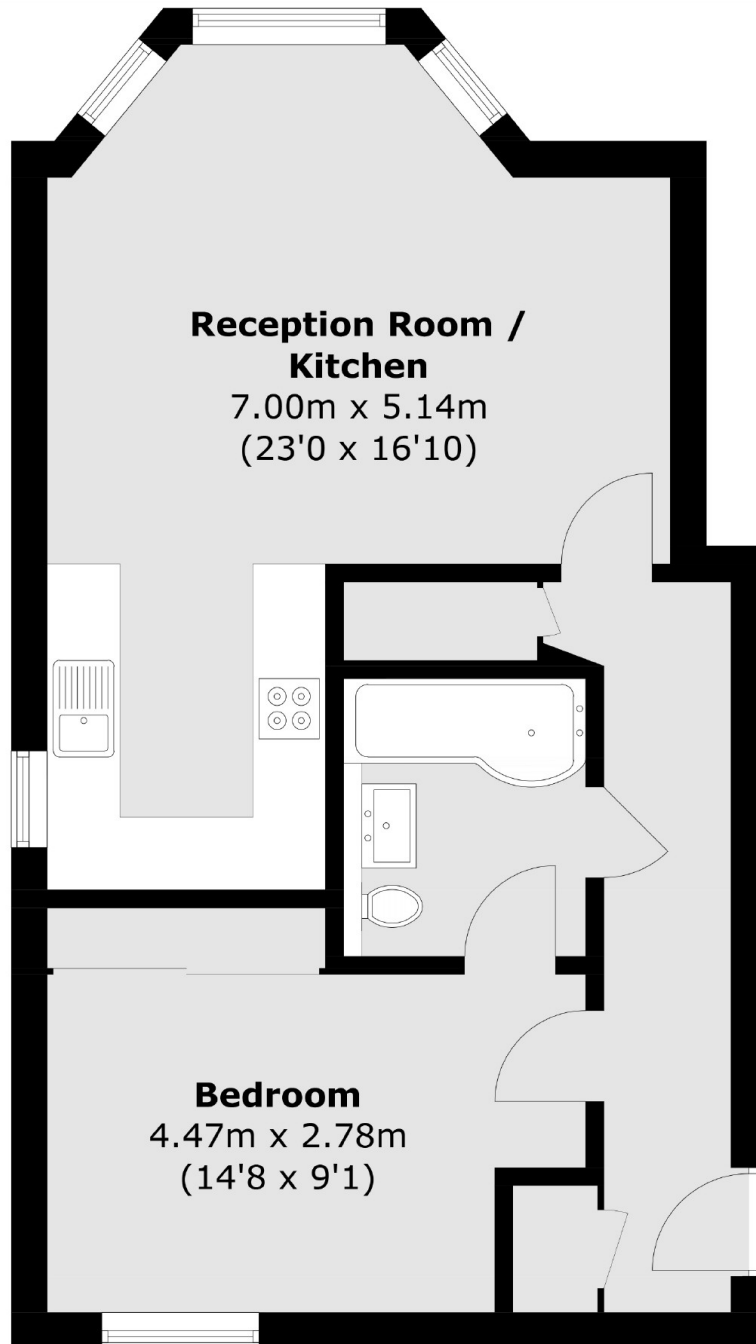
This bay fronted modern apartment has been designed in a Period Style. There is an open plan kitchen/reception room, utility room, one double bedroom, communal gardens and an allocated parking space.

Avenue Elmers is a tree lined road with everything you need within half a mile, including the River Thames, the desirable Maple Road, Surbiton's popular high street and the mainline train station with it's fast links into London.

Features

- Spacious Ground Floor
- One Double Bedroom
- Communal Gardens
- Off-Street Parking
- Great Location
- Long Lease

Avenue Elmers, Surbiton, KT6



Total area (approx.): 54.6 sq. m (587.7 sq. ft)