



Grand Avenue, KT5

£800,000

Dexters



Grand Avenue, KT5

This semi detached three bedroom family home is in immaculate condition throughout. There is a through reception room, open plan kitchen, modern bathroom, garage, shared driveway and a large garden looking over Berrylands Nature Reserve.

The ground floor has been wonderfully extended to create a family space with a double reception room with a contemporary kitchen/dining room, a downstairs w/c and views out onto the garden.

To the first floor there are two double bedrooms, a good sized third bedroom and a modern family bathroom. There is scope to further extend up into the loft (STPP).

Externally there is a pretty front garden, a large mature rear garden with views overlooking Berrylands Nature Reserve, a shared driveway and a garage.

Grand Avenue is just under a mile away from Berrylands train station and has Berrylands nature reserve, local parks, shops and great schools nearby. Surbiton train station with its fast links into London is 1.4 Miles away.

Features

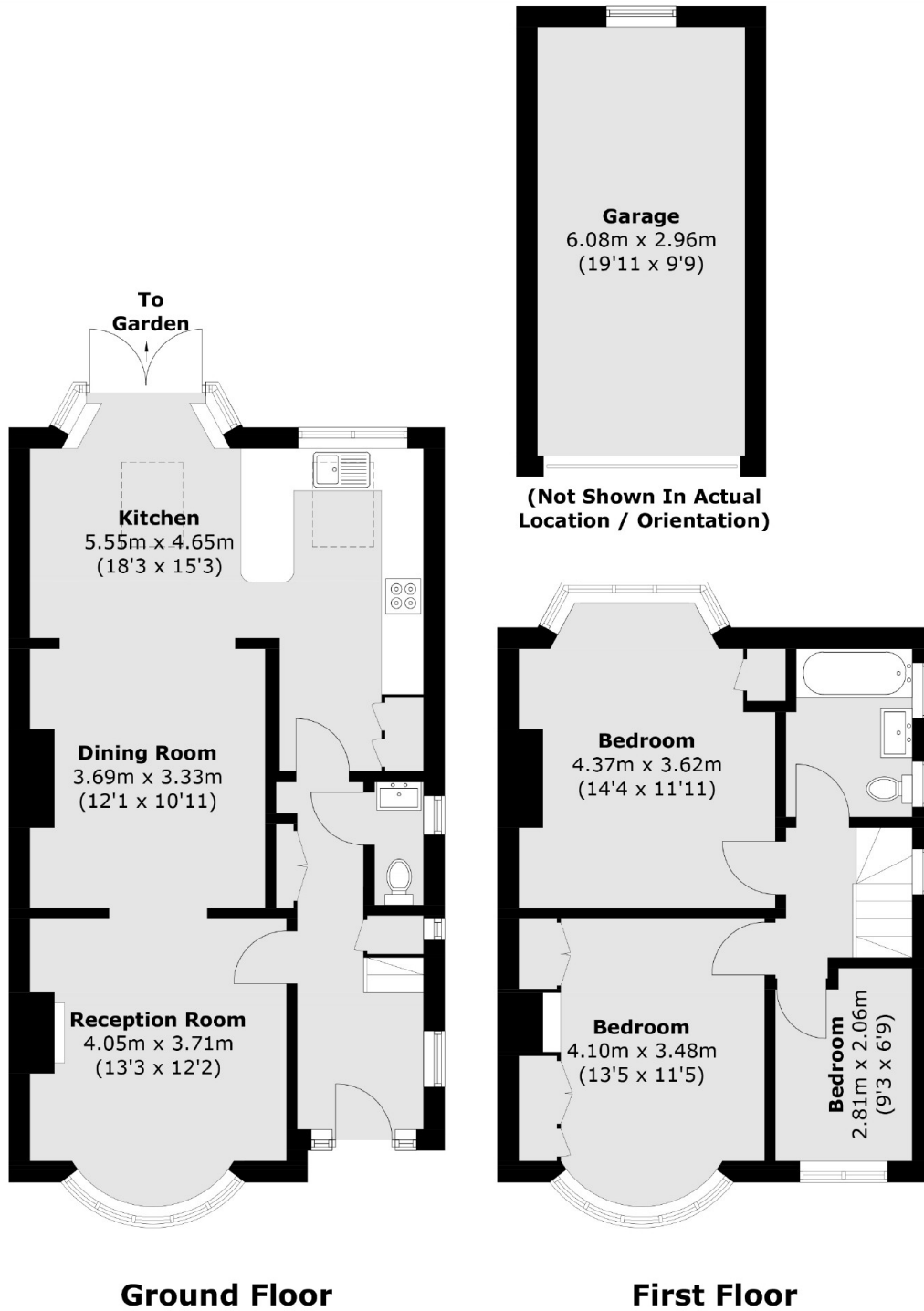
- Three Bedrooms
- Semi Detached
- Great Condition
- Large Mature Garden
- Shared Driveway
- Garage







Grand Avenue, Surbiton, KT5



Total area (approx.): 102.0 sq. m (1,097.9 sq. ft)
Garage: 18.0 sq. m (193.7 sq. ft)