



**Speer Road, KT7**

**£595,000**

**Dexters**



## Speer Road, KT7

A beautifully presented three bedroom maisonette. This wonderful property is set over two floors and has an extended kitchen/dining room, a reception room, three bedrooms and bathroom and a private garden. It could also be extended in to the loft (STPP)

The property has it's own front door with a welcoming hallway that leads to the modern kitchen/dining room which has vaulted ceilings and wooden beams with double doors out onto the pretty private garden.

Upstairs there is a bay fronted living room with feature fireplace, a good sized main bedroom, two further bedrooms and a modern family bathroom.

The property further benefits from potential to extend further into the loft (STP) and currently has a storage shed to the rear of the property which could be made into a home office (STP).

Speer Road is a quiet residential road that is less than 0.3 miles from Thames Ditton station and the village and just 0.2 miles from the River Thames. It is also within the catchment area for sought after schools and Surbiton is under 1.5 miles.

### Features

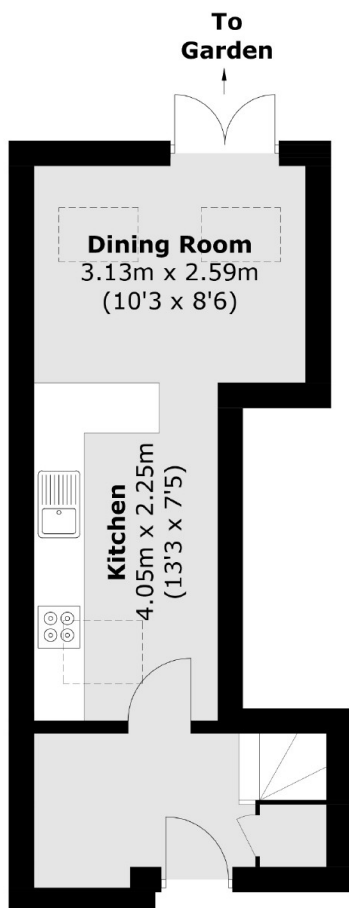
- Maisonette
- Beautifully Presented
- Split Level
- Three Bedrooms
- Private Garden
- Potential To Extend (STPP)



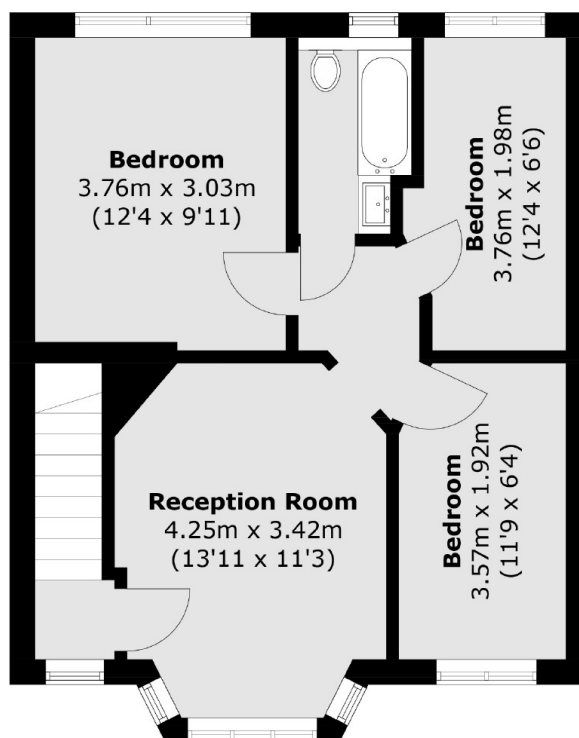




# Speer Road, Thames Ditton, KT7



**Ground Floor**



**First Floor**

Total area (approx.): 72.6 sq. m (781.4 sq. ft)